

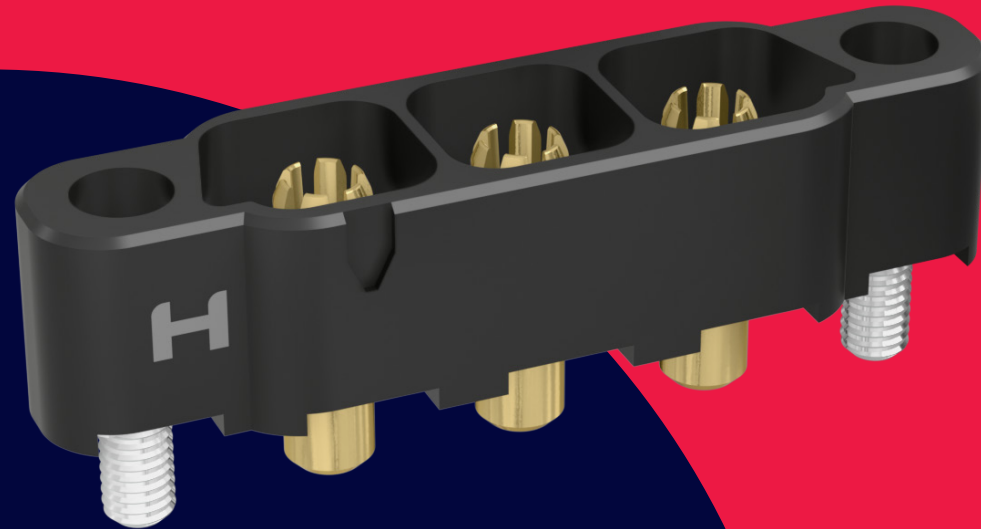
# HARWIN

CONNECT TECHNOLOGY  
WITH CONFIDENCE



# HRI

RANGE



 **KONA**<sup>®</sup>

# HIGH RELIABILITY HIGH CURRENT

MAXIMUM POWER CONNECTORS

 [WWW.HARWIN.COM](http://WWW.HARWIN.COM)

**HARWIN**



# HRI CONNECTORS FROM HARWIN.

## MAXIMUM POWER CONNECTIONS FOR SWAP-C OPTIMIZATION

For applications that must not fail, Kona brings high-reliability power connection at 8.50mm pitch. High current with robust housings; tough and lightweight performance under shock/vibration and temperature.

Kona contacts are fully and individually shrouded, with built-in polarization for maximum protection and minimal damage due to handling or mis-mating.

Cable-to-board and cable-to-cable; pin counts of 2, 3 and 4 at 60A per contact, for a combined power level of 240A. Maximum voltage rating of 3,000V delivered by 6-finger Beryllium copper alloy contacts. Connection integrity and good spring force achieves electrical connectivity in a variety of harsh environments.

Fit 8 AWG cable with silicone insulation, solder or crimp to straight or right-angle contacts before assembly to the

housings. Gold plating resists wear from continued use, or long-life durability in mate-and-forget operations.

Stainless steel screw-lock fixings with mate-before lock are available in both standard or reverse-fix configurations, with panel and board mount for additional security.

Cable assembly options are available from our in-house cabling experts, ready for your prototyping or production line needs.

## FEATURES

- Quick mating screw fixings for reliable proven connections
- High power connection under extreme environments – vibration, shock and temperature resistance
- Low outgassing, great for space, avionics and optronics

## APPLICATIONS

- Aviation and UAVs
- New Space
- Motorsport, EVs
- Defense & Security
- High-end Industrial





## SPECIFICATIONS

| MATERIALS  | ELECTRICAL                                | MECHANICAL                                       | ENVIRONMENTAL   |
|--|---|--|---|
| Housings:<br><b>Glass-Filled High Temperature Thermoplastic, UL94V-0</b> | Current per contact:<br><b>60A max</b>    | Durability:<br><b>250 mating cycles</b>          | Operating temperature:<br><b>-65°C to +150°C</b>                    |
| Contacts:<br><b>Copper Alloy, Gold Plating</b>                           | Working voltage:<br><b>1,500V AC/DC</b>   | Insertion force (per contact):<br><b>70N max</b> | Humidity:<br><b>90-95% RH at +40°C for 96 hours</b>                 |
|  | Maximum voltage:<br><b>3,000V AC</b>      |  | Vibration resistance:<br><b>20G (196m/s<sup>2</sup>) for 12 hrs</b> |
| Screw-loks:<br><b>Stainless Steel</b>                                    | Contact resistance:<br><b>2mΩ max</b>     | Withdrawal force (per contact):<br><b>3N min</b> | Shock resistance:<br><b>100G (981m/s<sup>2</sup>)</b>               |
|  |   | Contact retention in housing:<br><b>35N min</b>  | Outgassing:<br><b>0.05%TML, 0.00% CVCM</b>                          |
| Metal Backshells:<br><b>Aluminium Alloy</b>                              | Insulation resistance:<br><b>10GΩ min</b> | Pitch:<br><b>8.50mm</b>                          | Compliance:<br><b>RoHS Compliant<br/>REACH / CMRT statements</b>    |

Specifications are subject to change.





## PRODUCT CATEGORIES

### CABLE CONNECTOR PARTS

Male and female cable housings and contacts available separately. Options for either straight or right-angle cable exit, to suit any layout requirement. Jackscrews are supplied assembled to the housings. Standard gender and reverse fix options.



### CABLE ASSEMBLIES

Ready-to-use cabled connectors, single or double ended, fully inspected and tested. Ideal for both prototyping and full production requirements.



### TOOLING & ACCESSORIES

Associated products and tooling to support the Kona range.



Specifications are subject to change.



VIEW FULL SERIES & SPECIFICATIONS [HERE](#)

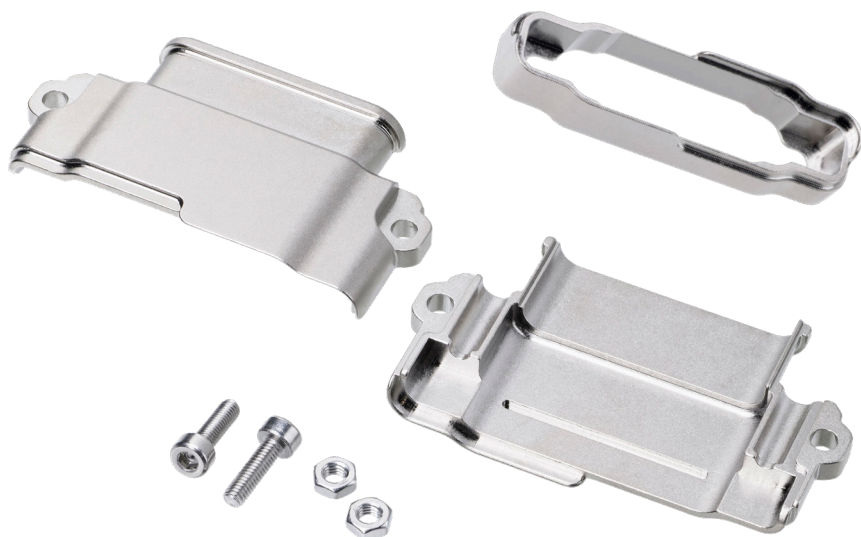




## PRODUCT CATEGORIES

### BACKSHELLS

Lightweight aluminium alloy backshells for cable, panel and PCB mounting. EMC shielding with metal braid and micro-band fixing, available as separate components or as completed ready-made cable assemblies. Robust hoods for long-term physical protection.



Specifications are subject to change.



### PCB CONNECTORS

Male board-mounted connectors with board mount or reverse fix screws. Vertical and horizontal orientations. Board mount nuts available separately.



VIEW FULL SERIES & SPECIFICATIONS [HERE](#)





## DOWNLOADS

### TECHNICAL DOCUMENTS

Component Specification (including pin numbering system)



### PRODUCT TRAINING

Product Training Module (PTM)



### TEST REPORTS

**HT076** – Kona General Testing



Specifications are subject to change.



VIEW FULL SERIES & SPECIFICATIONS **HERE**



# HARWIN

CONNECT TECHNOLOGY  
WITH CONFIDENCE



**HRI**  
RANGE



**BBI**  
RANGE



**Ezi**  
RANGE

FOR FURTHER INFORMATION PLEASE CONTACT:

[SUPPORT@HARWIN.COM](mailto:SUPPORT@HARWIN.COM)

[WWW.HARWIN.COM](http://WWW.HARWIN.COM) ○