

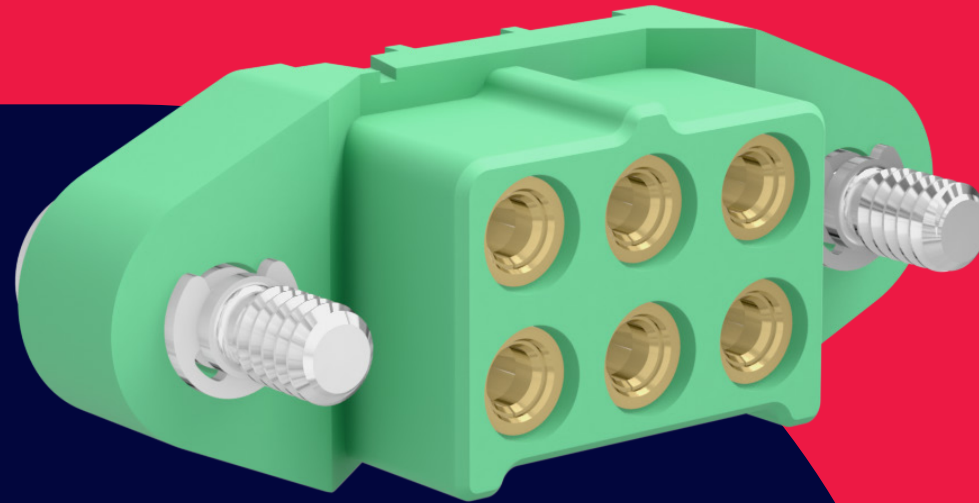
HARWIN

CONNECT TECHNOLOGY
WITH CONFIDENCE



HARWIN

RANGE



M300

HIGH RELIABILITY HIGH TEMPERATURE

ROBUST COMPACT POWER CONNECTORS

WWW.HARWIN.COM

HARWIN

M300

HRI CONNECTORS FROM HARWIN.

ROBUST & COMPACT POWER CONNECTIONS FOR SWAP-C OPTIMIZATION

Connectors designed for challenging environments, with a wide temperature range, vibration and shock resistance and strain-resistant mating. Durability with robust housings; tough and lightweight.

Power handling in a small but versatile design. Easy to assemble and mate with polarization and shrouding, position 1 marking, and a robust housing design.

Cable-to-board and board-to-board; pin counts of 3, 6 and 10 at up to 10A per contact. Maximum voltage rating of 1,800V delivered by 4-finger Beryllium copper alloy contacts. Accommodates working temperatures from -65°C to +175°C, maintaining electrical connectivity in a variety of harsh environments.

Gold plating resists wear from continued use: mating durability exceeds 1,000 operations. Delivering long-life durability in mate-and-forget operations.

Use the stainless steel jackscrews for connector-to-connector strain relief; add backpotting resin inside the cable connector rear cavity to protect against cable strain. Cable assembly options are available from our in-house cabling experts, ready for your prototyping or production line needs.

FEATURES

- Comprehensive operating temperature range for a wide variety of challenging environments
- Power connection under extreme environments – vibration, shock and temperature resistance
- Low outgassing, great for space, avionics and optronics

APPLICATIONS

- Aviation and UAVs
- New Space
- Motorsport, EVs
- Defense & Security
- High-end Industrial



M300

SPECIFICATIONS

MATERIALS	ELECTRICAL	MECHANICAL	ENVIRONMENTAL
Housings: Glass-Filled High Temperature Thermoplastic, UL94V-0	Current per contact: 10A max	Durability: 1,000 mating cycles	Operating temperature: -65°C to +175°C
	Working voltage: 600V AC/DC	Insertion force (per contact): 9N max	Humidity: 90% RH at +40°C for 56 days
Contacts: Copper Alloy, Gold Plating	Maximum voltage: 1,800V AC	Withdrawal force (per contact): 1N min	Vibration resistance: 10G (98.1m/s²) for 9 hrs
	Contact resistance: 6mΩ max	Contact retention in housing: 15N min	Shock resistance: 100G (981m/s²)
Jackscrews: Stainless Steel	Insulation resistance: 100MΩ min	Pitch: 3.00mm	Outgassing: 0.68% TML, 0.01% CVCM, 0.26% WVR
			Compliance: RoHS Compliant REACH / CMRT statements

Specifications are subject to change.

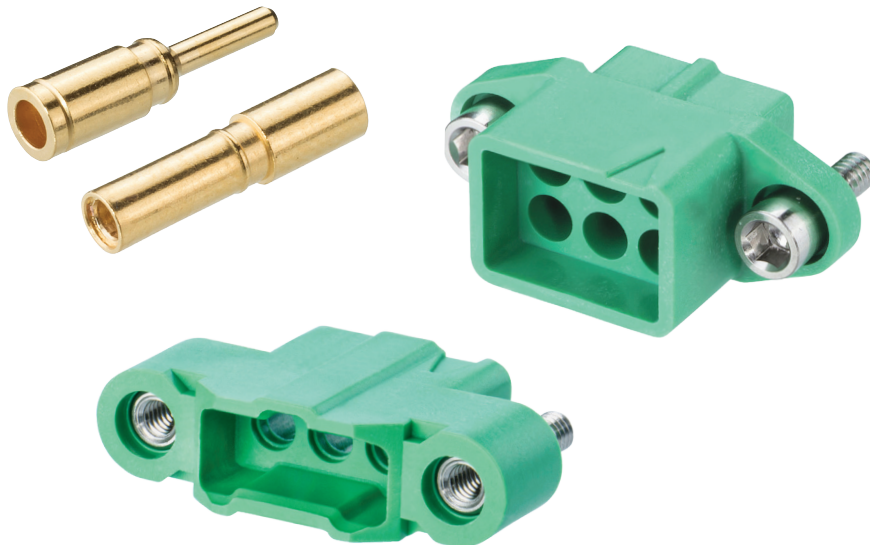


M300

PRODUCT CATEGORIES

CABLE CONNECTOR PARTS

Male and female cable housings and contacts available separately. Jackscrews are supplied assembled to the housings. Floating fixings on female connectors; male housings available with front panel mount.



Specifications are subject to change.



CABLE ASSEMBLIES

Ready-to-use cabled connectors, single or double ended, fully inspected and tested. Ideal for both prototyping and full production requirements.



VIEW FULL SERIES & SPECIFICATIONS [HERE](#)

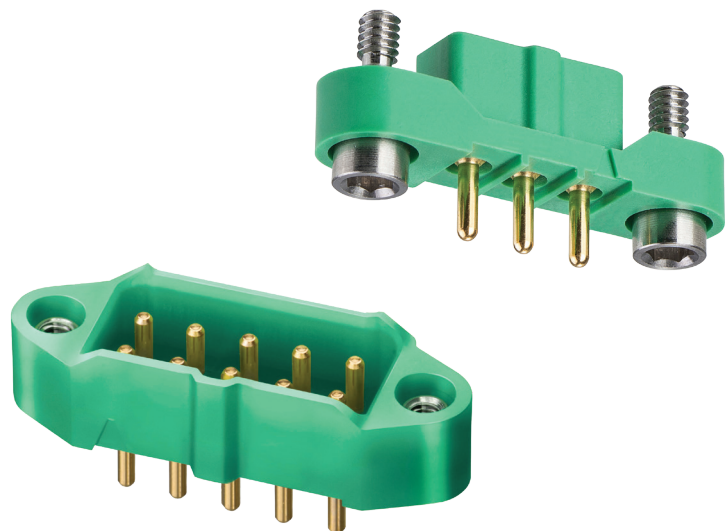


M300

PRODUCT CATEGORIES

PCB CONNECTORS

Female and male board-mounted connectors with intermating jackscrews. Vertical orientation. No. 1 contact indication.



TOOLING & ACCESSORIES

Associated products and tooling to support the M300 range.



Specifications are subject to change.

M300

DOWNLOADS

TECHNICAL DOCUMENTS

Component Specification (including pin numbering system)



PRODUCT TRAINING

Product Training Module (PTM)



TEST REPORTS

HT043 – M300 General Testing



Specifications are subject to change.



VIEW FULL SERIES & SPECIFICATIONS **HERE**



HARWIN

CONNECT TECHNOLOGY
WITH CONFIDENCE



HRI
RANGE



BBI
RANGE



Ezi
RANGE

FOR FURTHER INFORMATION PLEASE CONTACT:

SUPPORT@HARWIN.COM

WWW.HARWIN.COM