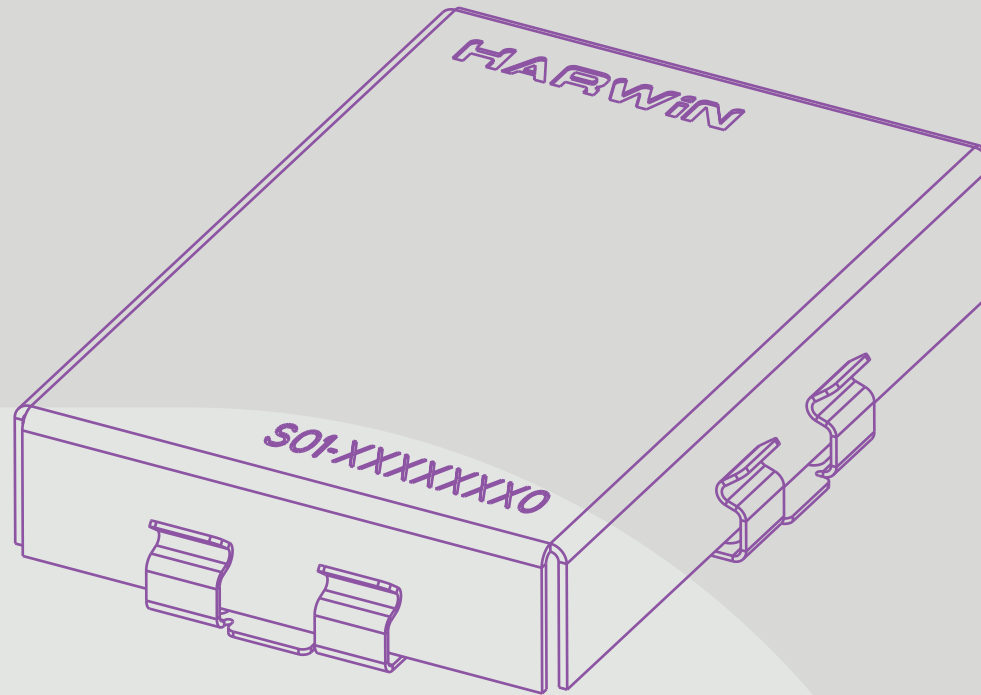


HARWIN

CONNECT TECHNOLOGY
WITH CONFIDENCE



SHIELDING BOARD LEVEL RFI/EMC SHIELDING

REPLACEABLE SHIELD CANS AND SMT RETENTION CLIPS



INNOVATIVE
DESIGNS FOR
EASY ASSEMBLY

Ezi
RANGE

HARWIN

SHIELDING

Ezi SHIELDING FROM HARWIN.

Replaceable Shield Cans and SMT Retention Clips

Speed up board-level shielding with a Clip and Can system. Faster to assemble, eliminates hand soldering, prevents hot spots and damage to vulnerable devices.

Traditional board-level shielding requires hand soldering to the PCB after the other components and devices have been assembled and reflow soldered.

With surface-mounted clips and push-on cans, the soldering is carried out with the rest of the PCB. Supplied on Tape and reel with pick and place zones, full automation is easy.

The cans are then hand-assembled in a very fast secondary operation – just push into place. No additional skilled secondary soldering required, no danger of heat damage to nearby components.

Cans are also easy to remove, re-use and replace for any maintenance, rework or upgrade under the shield. Fast and clean – no de-soldering clean-up activity.

FEATURES

- No secondary soldering operations, fast and simple to assemble
- Re-usable shield cans easy to remove for rework and maintenance
- SMT retaining clips supplied tape and reeled for volume automation

APPLICATIONS

- Industrial
- Wireless modules
- New space
- Motorsport
- Avionics and space



VIEW EMC CAN SERIES [HERE](#)



VIEW EMC CLIP SERIES [HERE](#)

SHIELDING

SPECIFICATIONS

MATERIALS	DIMENSIONS	PACKAGING	ENVIRONMENTAL
Removable Cans: Nickel Silver, clean finish	Can area sizes: 10mm x 10mm min 50mm x 25mm max	Can packaging: Tape & Reel Tape & Reel strips	Compliance: RoHS Compliant REACH / CMRT statements
	Can height sizes (internal): 2.5mm to 6mm		
	Can thicknesses: 0.15mm, 0.20mm, 0.30mm		
SMT Retention Clips: Copper Alloy or Stainless Steel, Tin Plating	SMT Clip heights: 0.8mm to 5.45mm	SMT Clip packaging: Tape & Reel	
	SMT Clip thickness allowances: 0.13mm to 1.00mm		

Specifications are subject to change.



VIEW EMC CAN SERIES [HERE](#)



VIEW EMC CLIP SERIES [HERE](#)



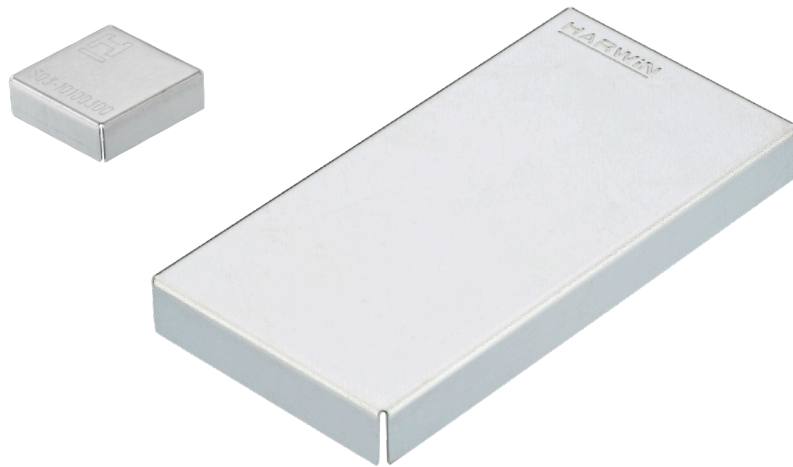
SHIELDING

PRODUCT CATEGORIES

Removable EMC/RFI Shield Cans

Simple 5-sided nickel-silver cans for board level shielding (BLS). When used with retention clips, these cans are easy to remove and replace for fault-checking, maintenance, chip and module upgrades.

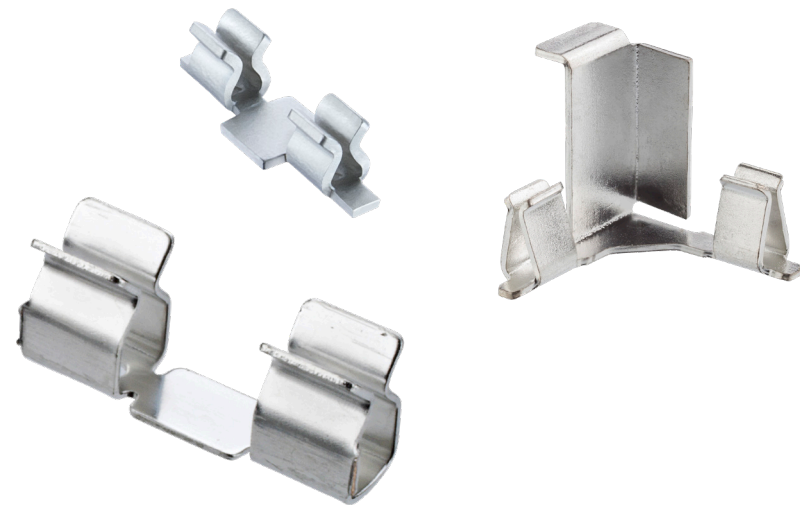
No soldering removes any risk of heat damage and hotspots that could damage the enclosed components. Available in 0.15mm, 0.2mm or 0.3mm thicknesses for matching to different EMI/RFI characteristics.



SMT Retention clips

Use with the removable EMC shield cans for a simple and cost-effective method of PCB shielding. Clips are supplied in Tape and Reel packaging, ready for automated pick and place in low or high volume production. No additional soldering operation required.

Range includes compact, corner, low profile and high force options. Suitable for can thicknesses from 0.13mm to 1.00mm.



Specifications are subject to change.



VIEW EMC CAN SERIES [HERE](#)



VIEW EMC CLIP SERIES [HERE](#)

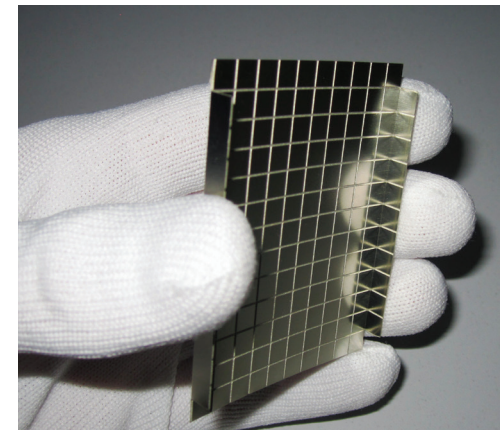
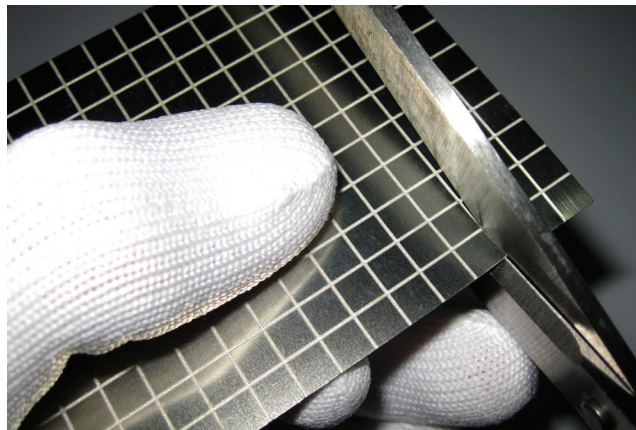
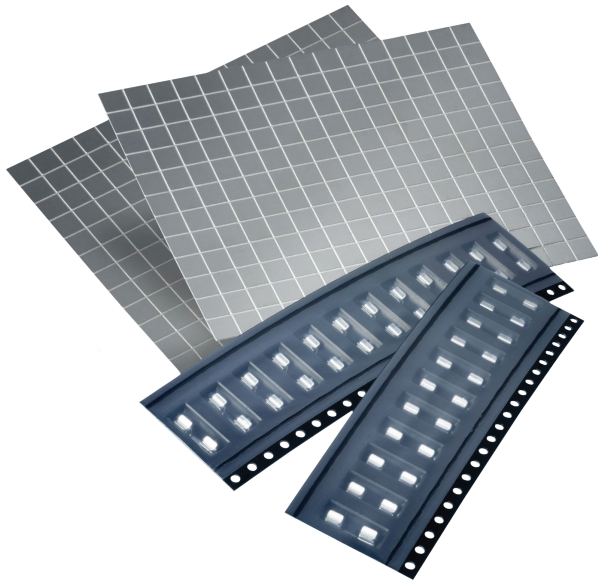
SHIELDING

PRODUCT CATEGORIES

RFI Shield Can Development Kit

Make your own Shield Can in minutes. Kit contains 2 x DIY shield can blank sheets, scored at 5mm intervals for easy folding. Simple 5-sided nickel-silver cans for board level shielding (BLS). Includes 24 x SMT clips and an instruction sheet.

Great for prototyping – make cans up to 50mm x 70mm, 5mm high.



Specifications are subject to change.



[VIEW EMC CAN SERIES](#)  **HERE**

[VIEW EMC CLIP SERIES](#)  **HERE**

SHIELDING

DOWNLOADS

Product Training

Product Training Module (PTM) [↗](#)

Shield Can Kit Instruction Sheet [↗](#)

SMT Shield Clip comparison chart [↗](#)

Test Reports

HT026 – Shield Clips S1411, S1711, S1721 Environmental (Vibration, Shock, Bump) [↗](#)

HT066 – Shield Clips S9011, S9021 - General [↗](#)

Specifications are subject to change.



[↗](#)
VIEW EMC CAN SERIES **HERE**

[↗](#)
VIEW EMC CLIP SERIES **HERE**

HARWIN

CONNECT TECHNOLOGY
WITH CONFIDENCE



HIGH RELIABILITY
WITH SUPREME
PERFORMANCE

HRI
RANGE



DEPENDABLE
CONNECTIVITY
ACROSS THE BOARD

BBI
RANGE



INNOVATIVE
DESIGNS FOR
EASY ASSEMBLY

EZI
RANGE

FOR FURTHER INFORMATION PLEASE CONTACT:

Europe, Middle East & Africa

E: technical@harwin.com

Americas

E: technical-us@harwin.com

Asia Pacific

E: technical-asia@harwin.com

// WWW.HARWIN.COM