

MMCX Coax Connectors

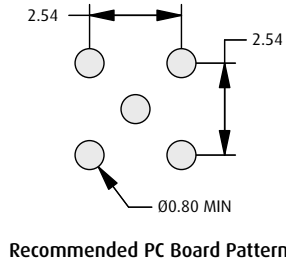
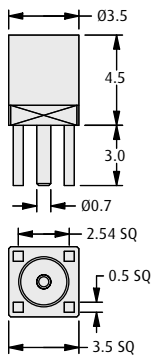
Female Coax Jacks



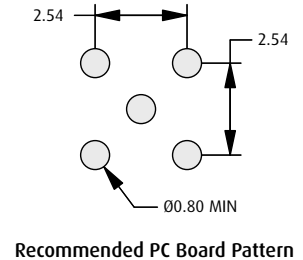
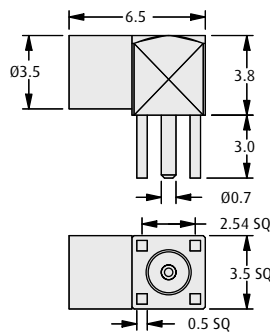
- ❖ Snap-on coupling.
- ❖ Suitable for cable-to-board and cable-to-cable applications.
- ❖ For other coax styles or custom variants, contact technical@harwin.com.

PC TAIL

VERTICAL JACK

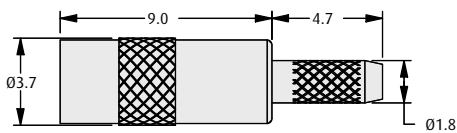


HORIZONTAL JACK

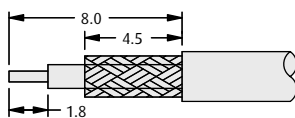


CRIMP

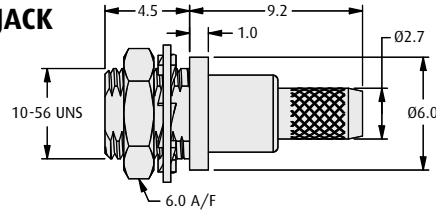
STRAIGHT JACK



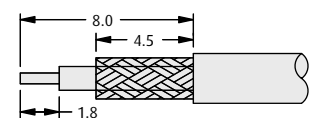
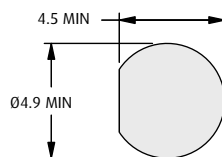
Suitable for cables RG178/U & RG196/U



BULKHEAD JACK



Suitable for cables RG174/U, RG188A/U & RG316/U



HOW TO ORDER

MMCX - XX 05

SERIES CODE

FINISH

CONNECTOR TYPE

30	Vertical PC Tail
35	Horizontal PC Tail
50	Straight Crimp
53	Bulkhead Crimp

05 Gold

www.harwin.com

