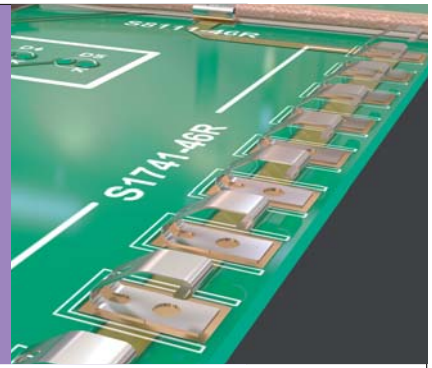


# Spring Contacts

## Grounding / RFI Contacts

- ❖ SMT devices for use in shielding and grounding applications.
- ❖ For use on surface mount PCBs, in contact with metal shields or frames.
- ❖ Suitable for both wiping and sliding actions.
- ❖ Ideal for automated requirements, using standard placement equipment.



1.7mm HIGH		2.5mm HIGH	
	<p><b>ORDER CODE</b> S7121-42R </p>		<p><b>ORDER CODE</b> S1741-46R </p>
<p>Recommended PC Board Pattern</p>		<p>Recommended PC Board Pattern</p>	
2.7mm HIGH		3.5mm HIGH	
	<p><b>ORDER CODE</b> S7091-42R </p>		<p><b>ORDER CODE</b> S1761-42R  S1761-46R </p>
<p>Recommended PC Board Pattern</p>		<p>Recommended PC Board Pattern</p>	
4.0mm HIGH		5.5mm HIGH	
	<p><b>ORDER CODE</b> S1791-42R </p>		<p><b>ORDER CODE</b> S7061-42R </p>
<p>Recommended PC Board Pattern</p>		<p>Recommended PC Board Pattern</p>	

All dimensions in mm.

[www.harwin.com](http://www.harwin.com)

BoardWare

