

Customer Information Sheet

DRAWING No.: S422-XX

SHEET 3 OF 3

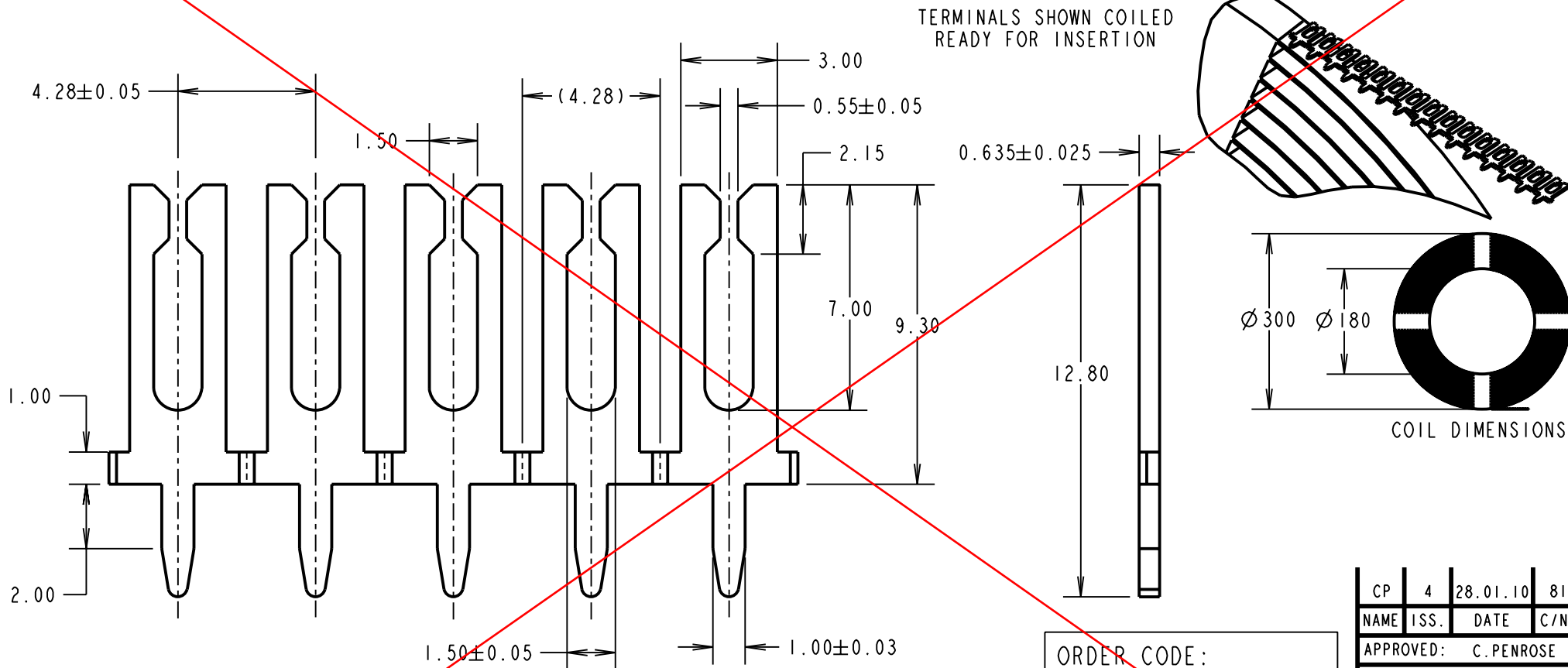
IF IN DOUBT - ASK

©

NOT TO SCALE

THIRD ANGLE PROJECTION

ALL DIMENSIONS IN mm



NOTES:

1. QUANTITY PER COIL = 16K.
COIL WEIGHT = 2.1kg.
2. RECOMMENDED MOUNTING HOLE SIZE = $\varnothing 1.015 \pm 0.075\text{mm}$.
3. STAMPING RADII OF 0.175mm APPLIES TO ALL CORNERS.
4. RECOMMENDED MATING PART = 0.80mm THICK BLADE.

OBSOLETE

ORDER CODE:

S422-XX

FINISH:

- 06 - 4 μ 90/10 TIN/LEAD
- 46 - 4 μ 100% TIN

CP	4	28.01.10	8128
NAME	ISS.	DATE	C/NOTE
APPROVED:		C. PENROSE	
CHECKED:		R. ADDE	
DRAWN:		D. C. BECK	
CUSTOMER REF.:			
ASSEMBLY DRG:			

HARWIN

HARWIN USA TEL: 603 893 5376 FAX: 603 893 5396 mis@harwin.com	HARWIN Europe (UK) TEL: 023 9231 4545 FAX: 023 9231 4590 mis@harwin.co.uk	HARWIN Asia TEL: +65 6 779 4909 FAX: +65 6 779 3868 mis@harwin.com.sg
------------------------------------------------------------------------	------------------------------------------------------------------------------------	--------------------------------------------------------------------------------

THIS DRAWING AND ANY INFORMATION OR DESCRIPTIVE MATTER SET OUT HEREON ARE CONFIDENTIAL AND COPYRIGHT PROPERTY OF THE HARWIN GROUP AND MUST NOT BE DISCLOSED, LOANED, COPIED OR USED FOR MANUFACTURING, TENDERING OR FOR ANY OTHER PURPOSE WITHOUT THEIR WRITTEN PERMISSION.

TOLERANCES

- X. = $\pm 1\text{mm}$
- X.X = $\pm 0.25\text{mm}$
- X.XX = $\pm 0.10\text{mm}$
- X.XXX = $\pm 0.01\text{mm}$
- ANGLES = $\pm 5^\circ$
- UNLESS STATED

MATERIAL:

BRASS CW508L HARD TO BS EN 1652 (CuZn37 HARD)

FINISH: SEE ORDER CODE

S/AREA: mm²

TITLE: 3.0mm VERTICAL BLADE COILED SOLENOID SPRING TERMINAL

DRAWING NUMBER:

S422-XX

SHT 3 OF 3