

Customer Information Sheet

DRAWING No.: S1901-XX

SHEET 2 OF 2

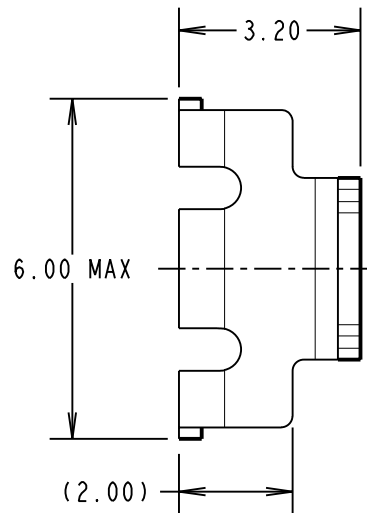
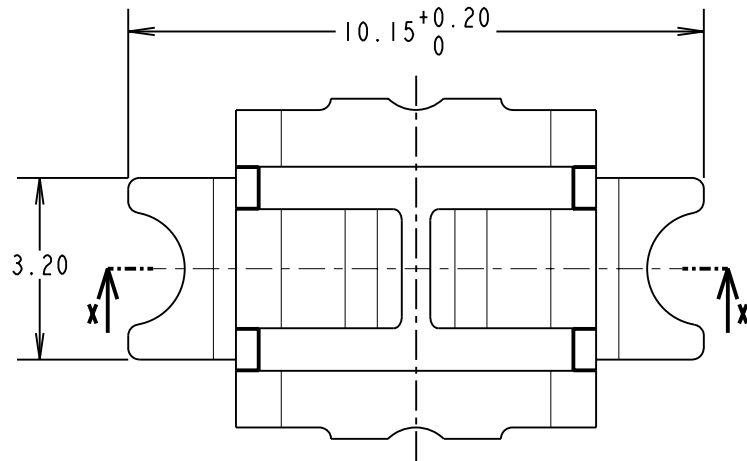
IF IN DOUBT - ASK

©

NOT TO SCALE

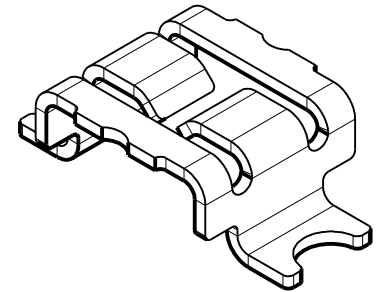
THIRD ANGLE PROJECTION

ALL DIMENSIONS IN mm

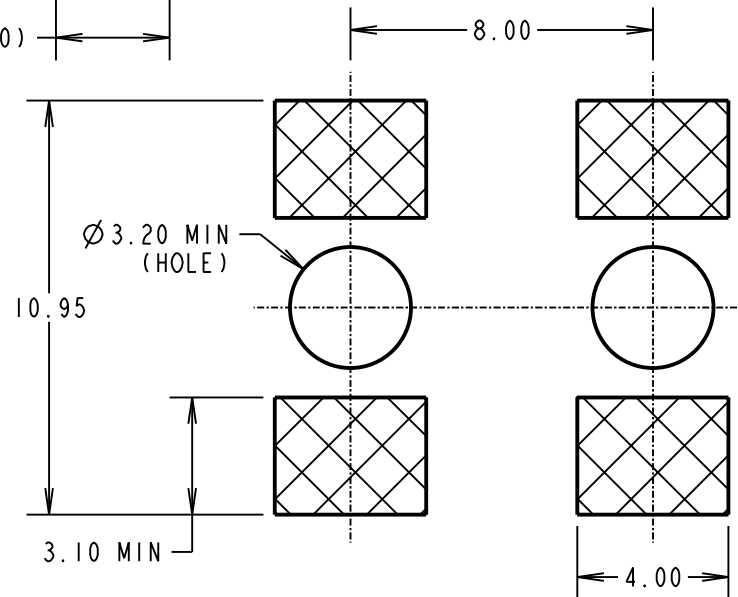
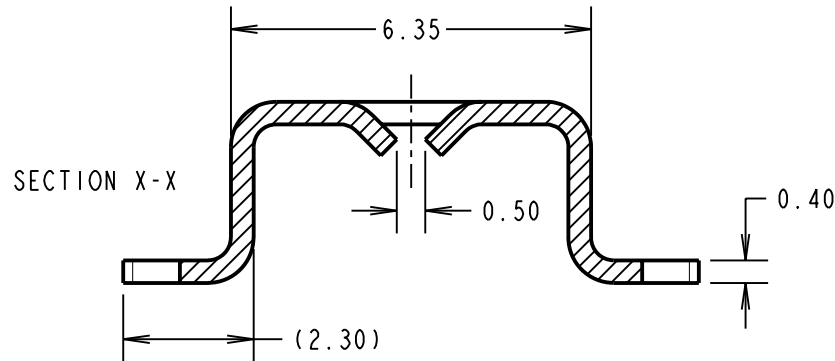


NOTES:

1. FOR TAPE AND REELED VERSION, SEE DRAWING S1901-XXR.
2. SUITABLE FOR USE WITH AUTOMOTIVE MINI BLADE FUSES, OR OTHER 2.8 x 0.8mm TERMINALS.
3. SUPPLIED IN BAGS OF 100.



RECOMMENDED PCB LAYOUT
(FOR TWO CLIPS FOR USE WITH
A MINI BLADE FUSE)



ORDER CODE	FINISH
S1901-06	TIN/LEAD
S1901-46	100% TIN

CP	3	21.05.10	10811
NAME	ISS.	DATE	C/NOTE
APPROVED: C.PENROSE			
CHECKED: R.ADDE			
DRAWN: W. J. BOURNE			
CUSTOMER REF.:			
ASSEMBLY DRG:			

HARWIN

HARWIN USA TEL: 603 893 5376 FAX: 603 893 5396 mis@harwin.com	HARWIN Europe (UK) TEL: 023 9231 4545 FAX: 023 9231 4590 mis@harwin.co.uk	HARWIN Asia TEL: +65 6 779 4909 FAX: +65 6 779 3868 mis@harwin.com.sg
--	--	--

THIS DRAWING AND ANY INFORMATION OR DESCRIPTIVE MATTER SET OUT HEREON ARE CONFIDENTIAL AND COPYRIGHT PROPERTY OF THE HARWIN GROUP AND MUST NOT BE DISCLOSED, LOANED, COPIED OR USED FOR MANUFACTURING, TENDERING OR FOR ANY OTHER PURPOSE WITHOUT THEIR WRITTEN PERMISSION.

TOLERANCES
 X. = ±1mm
 X.X = ±0.25mm
 X.XX = ±0.10mm
 X.XXX = ±0.01mm
 ANGLES = ±5°
 UNLESS STATED

MATERIAL:
 BRASS CW508L H150
 BS EN 1652: 1998

FINISH: SEE TABLE

S/AREA: mm²

TITLE:
 SMT MINI BLADE FUSE CLIP
 (LOOSE)

DRAWING NUMBER:
S1901-XX

SHT
2 OF 2