

Customer Information Sheet

DRAWING No.: M7765/66/67/71-XX

SHEET 2 OF 2

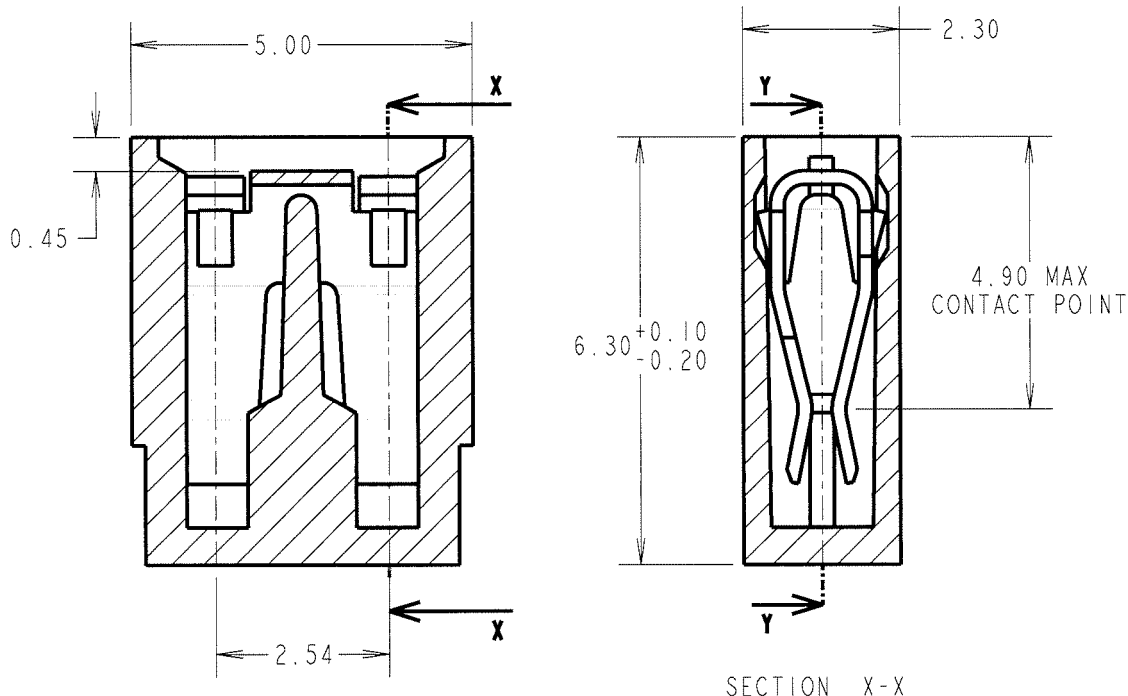
IF IN DOUBT - ASK

©

NOT TO SCALE

THIRD ANGLE PROJECTION

ALL DIMENSIONS IN mm



SECTION Y-Y

SECTION X-X

SPECIFICATIONS:

MATERIAL:

MOULDING = GLASS FILLED POLYESTER UL94V-0 (SEE ORDER CODE FOR COLOUR)

CLIP = PHOSPHOR BRONZE

FINISH:

05 = 0.13µ GOLD

06 = 3µ 90/10 TIN/LEAD

46 = 3µ 100% TIN

ELECTRICAL:

CURRENT RATING = 3A MAX

VOLTAGE RATING = 250V AC/DC

VOLTAGE PROOF = 750V AC

CONTACT RESISTANCE = 30mΩ MAX (TIN), 25mΩ MAX (GOLD)

INSULATION RESISTANCE = 1,000MΩ MIN

MECHANICAL:

DURABILITY = 50 OPERATIONS (TIN), 300 OPERATIONS (GOLD)

INSERTION FORCE = 12.5N MAX

WITHDRAWAL FORCE = 1.0N MIN

ENVIRONMENTAL:

TEMPERATURE RANGE = -40°C TO +85°C

PACKING:

BAG

NOTES:

- MATING PIN = 0.64mm SQUARE,
- FOR COMPLETE SPECIFICATIONS, SEE COMPONENT SPECIFICATION C003XX (LATEST ISSUE).

ORDER CODE:

M77XX-XX

MOULDING COLOUR

65 - LT. GREY

67 - BLACK

66 - RED

71 - BLUE

CONTACT FINISH

05 - GOLD

06 - TIN

46 = 100% TIN

JAE	7	21.02.05	8402
NAME	ISS.	DATE	C/NOTE
APPROVED: <i>[Signature]</i>			
CHECKED: <i>[Signature]</i>			
DRAWN: J.CLAY			
CUSTOMER REF.:			
ASSEMBLY DRG:			

HARWIN

THIS DRAWING AND ANY INFORMATION OR DESCRIPTIVE MATTER SET OUT HEREON ARE CONFIDENTIAL AND COPYRIGHT PROPERTY OF THE HARWIN GROUP AND MUST NOT BE DISCLOSED, LOANED, COPIED OR USED FOR MANUFACTURING, TENDERING OR FOR ANY OTHER PURPOSE WITHOUT THEIR WRITTEN PERMISSION.

TOLERANCES

X. = ±1mm
 X.X = ±0.25mm
 X.XX = ±0.10mm
 X.XXX = ±0.01mm
 ANGLES = ±5°
 UNLESS STATED

MATERIAL:

SEE ABOVE

FINISH: SEE ABOVE

S/AREA: mm²

TITLE:

CLOSED TOP
 JUMPER SOCKET

DRAWING NUMBER:

M7765-XX
M7766-XX

M7767-XX
M7771-XX

SHT
 2
 OF
 2

HARWIN INC
 U.S.A.

TEL: (812) 542 2540
 FAX: (812) 542 2541

HARWIN PLC
 U.K.

TEL: 023 9231 4545
 FAX: 023 9231 4590

HARWIN PTE
 SINGAPORE

TEL: 65 6779 4909
 FAX: 65 6779 3868