

Customer Information Sheet

DRAWING No.: M50-360XX42R

SHEET 3 OF 4

IF IN DOUBT - ASK

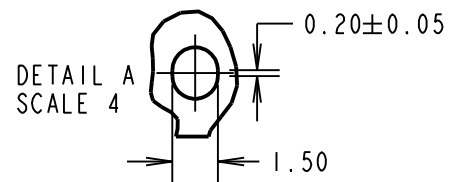
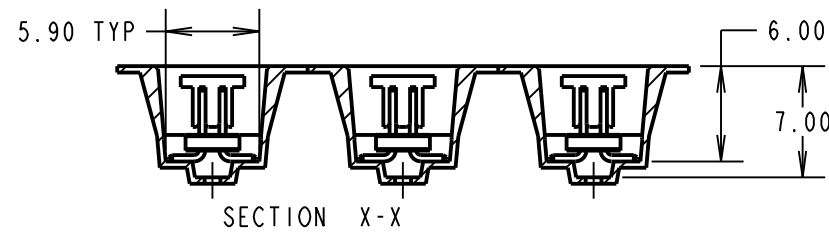
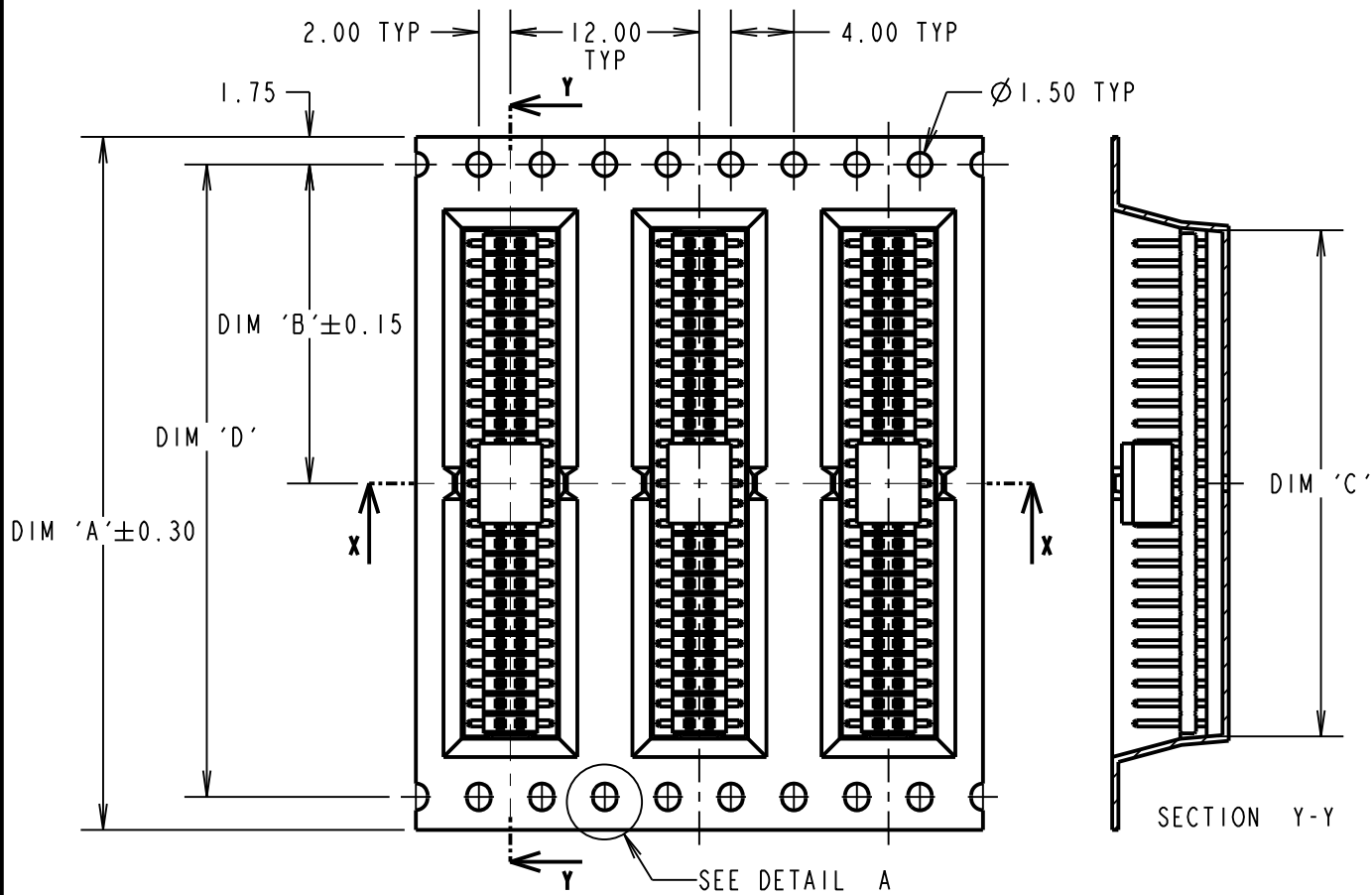
©

NOT TO SCALE

THIRD ANGLE PROJECTION

ALL DIMENSIONS IN mm

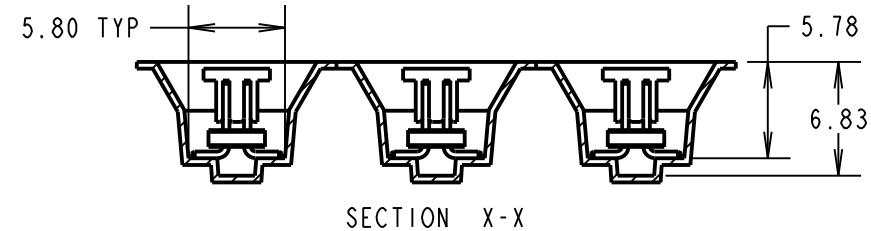
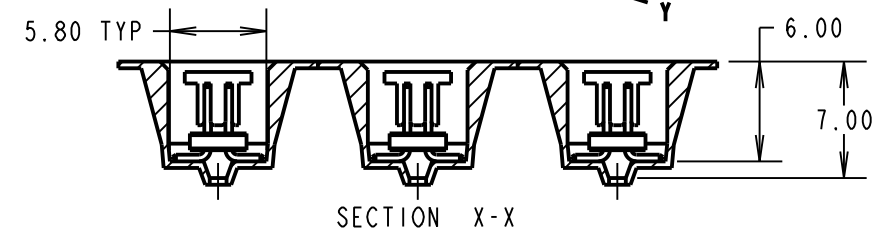
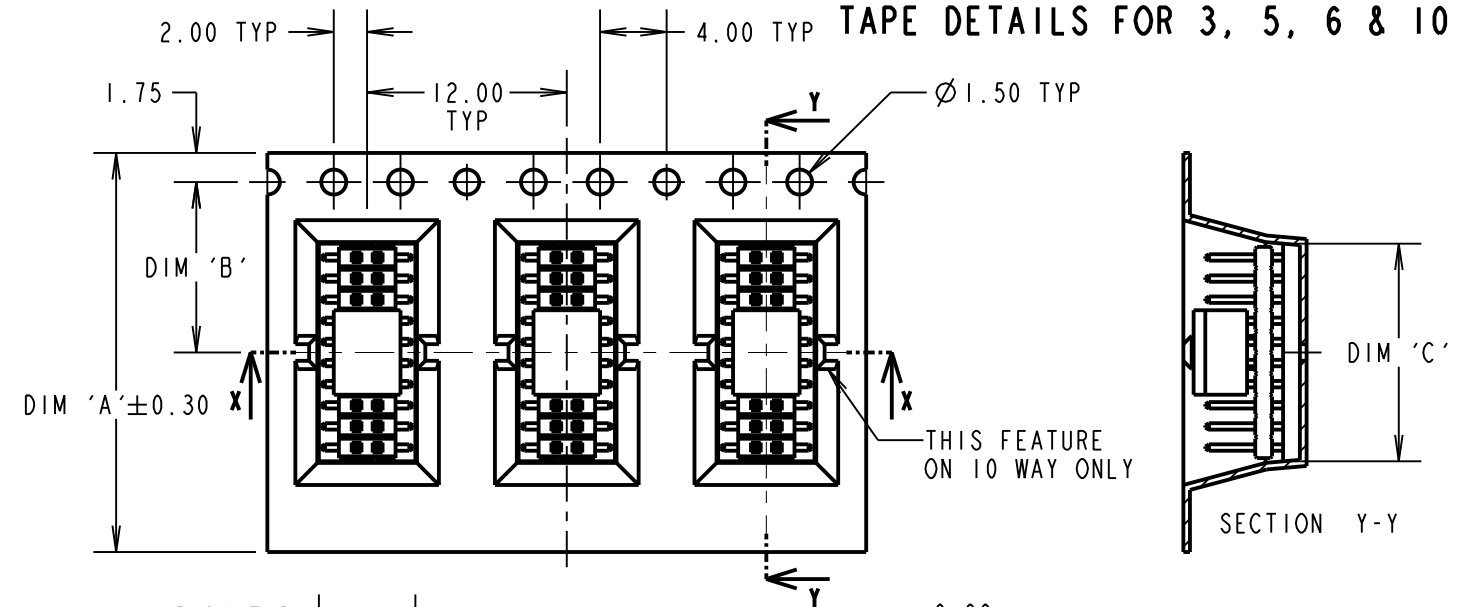
TAPE DETAILS FOR 20 & 25 WAYS



REELED PART No.	DIM 'A'	DIM 'B'	DIM 'C'	DIM 'D'	REEL QTY
M50-3600342R	16.00	7.50	4.00	—	800
M50-3600542R	24.00	11.50	6.65	—	800
M50-3600642R	24.00	11.50	7.90	—	800
M50-3601042R	24.00	11.50	13.00	—	750
M50-3602042R	44.00	20.20	25.70	40.40	750
M50-3602542R	44.00	20.20	32.10	40.40	750

- NOTES:
- CUMULATIVE TOLERANCES OVER 10 PITCHES = ± 0.20 mm
 - TAPE & REELING TO BE IN ACCORDANCE WITH EIA-481 (ELECTRONIC INDUSTRIES ASSOCIATION).
 - FOR CONNECTOR DETAILS SEE SHEET 4.

TAPE DETAILS FOR 3, 5, 6 & 10 WAYS

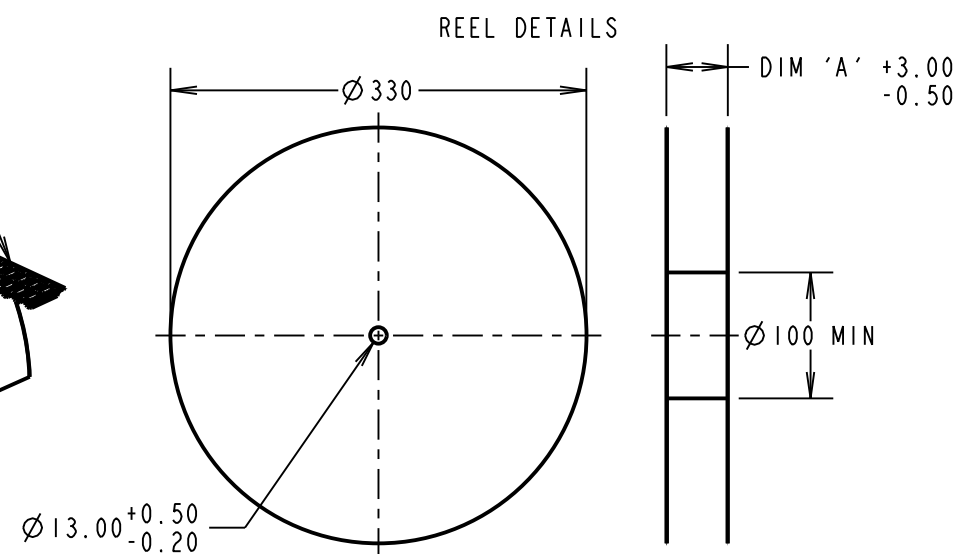
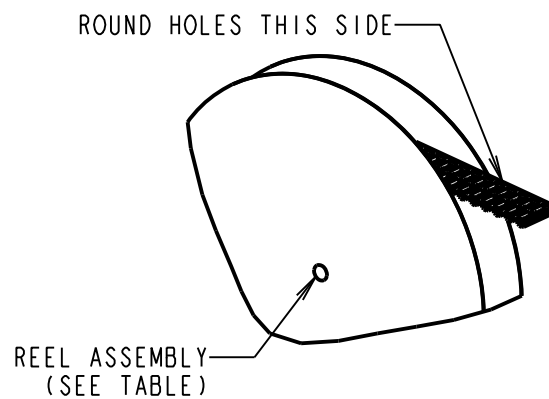


TAPE DETAILS FOR 05 WAY

ORDER CODE: **M50-360XX42R**

No. OF WAYS PER ROW: 03, 05, 06, 10, 20, 25

FINISH: SELECTIVE GOLD + 100% TIN



SB	8	06.03.12	11678
NAME	ISS.	DATE	C/NOTE
APPROVED:		S.BENNETT	
CHECKED:		M.G.PLESTED	
DRAWN:		R.ADDE	
CUSTOMER REF.:			
ASSEMBLY DRG:			

HARWIN

www.harwin.com
technical@harwin.com

THIS DRAWING AND ANY INFORMATION OR DESCRIPTIVE MATTER SET OUT HEREON ARE CONFIDENTIAL AND COPYRIGHT PROPERTY OF THE HARWIN GROUP AND MUST NOT BE DISCLOSED, LOANED, COPIED OR USED FOR MANUFACTURING, TENDERING OR FOR ANY OTHER PURPOSE WITHOUT THEIR WRITTEN PERMISSION.

TOLERANCES

X. = ± 1 mm
X.X = ± 0.25 mm
X.XX = ± 0.10 mm
X.XXX = ± 0.01 mm
ANGLES = $\pm 5^\circ$
UNLESS STATED

MATERIAL:

SEE ABOVE

FINISH:

SEE ABOVE

S/AREA:

mm²

TITLE: 1.27mm PITCH DIL SMT VERT LOW PROFILE SOCKET ASSY (TAPE & REEL)

DRAWING NUMBER:

M50-360XX42R

SHT 3 OF 4

Customer Information Sheet

DRAWING No.: M50-360XX42R

SHEET 4 OF 4

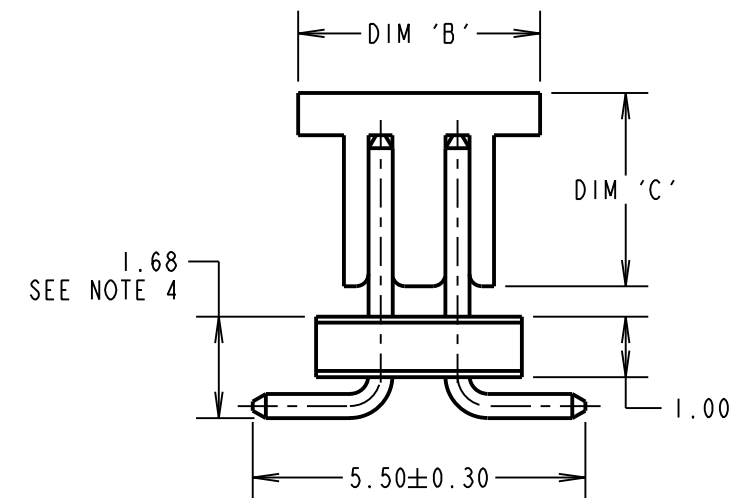
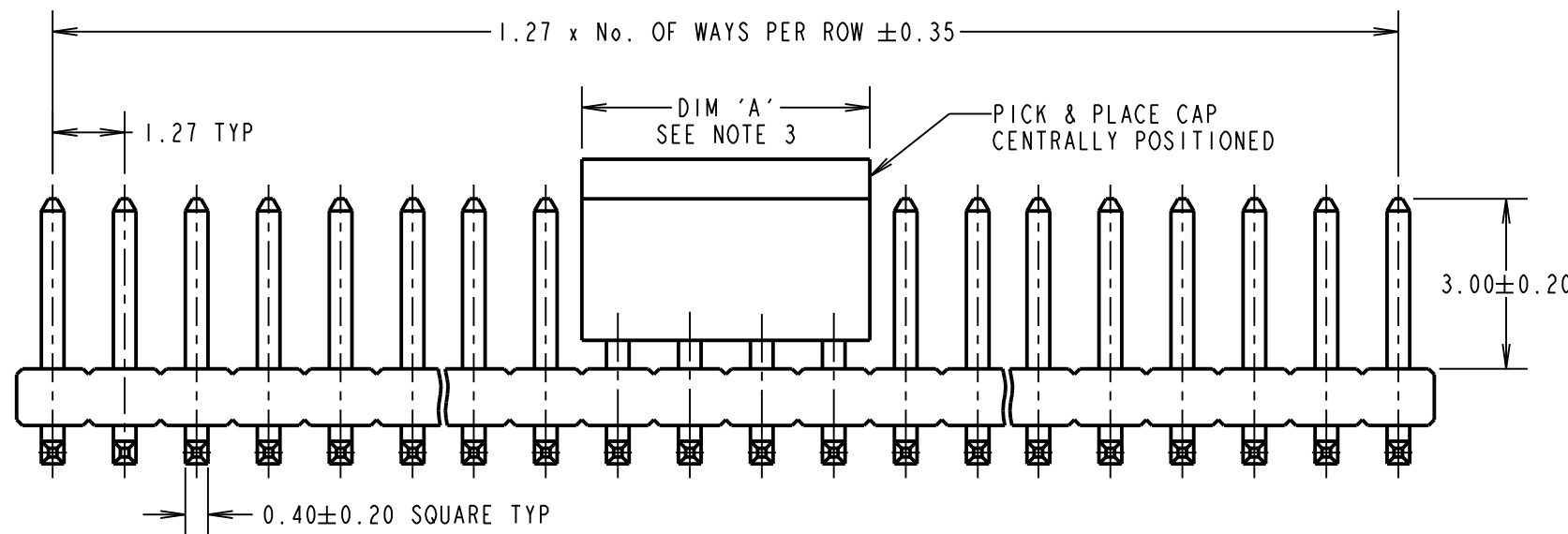
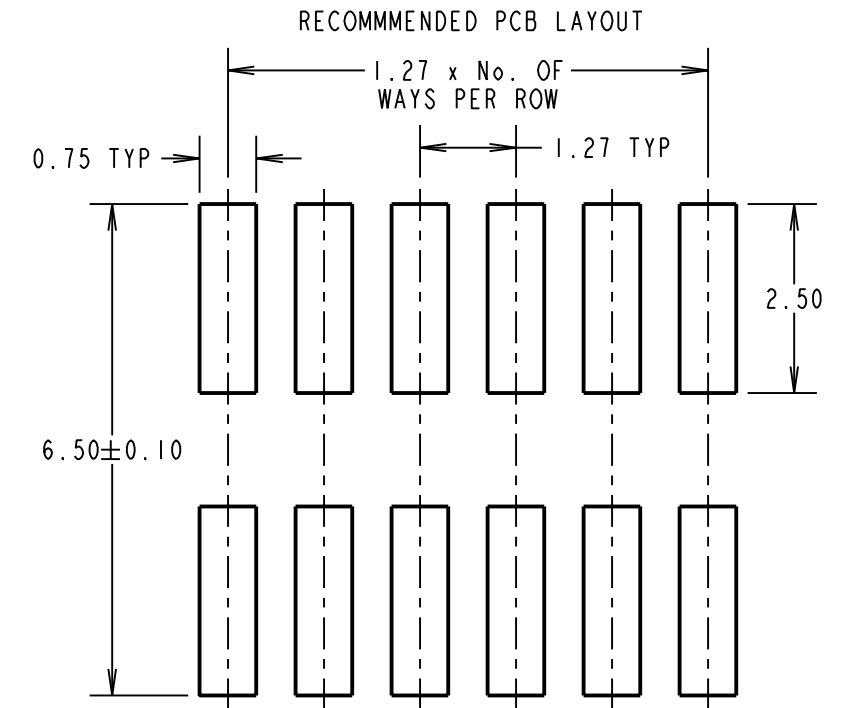
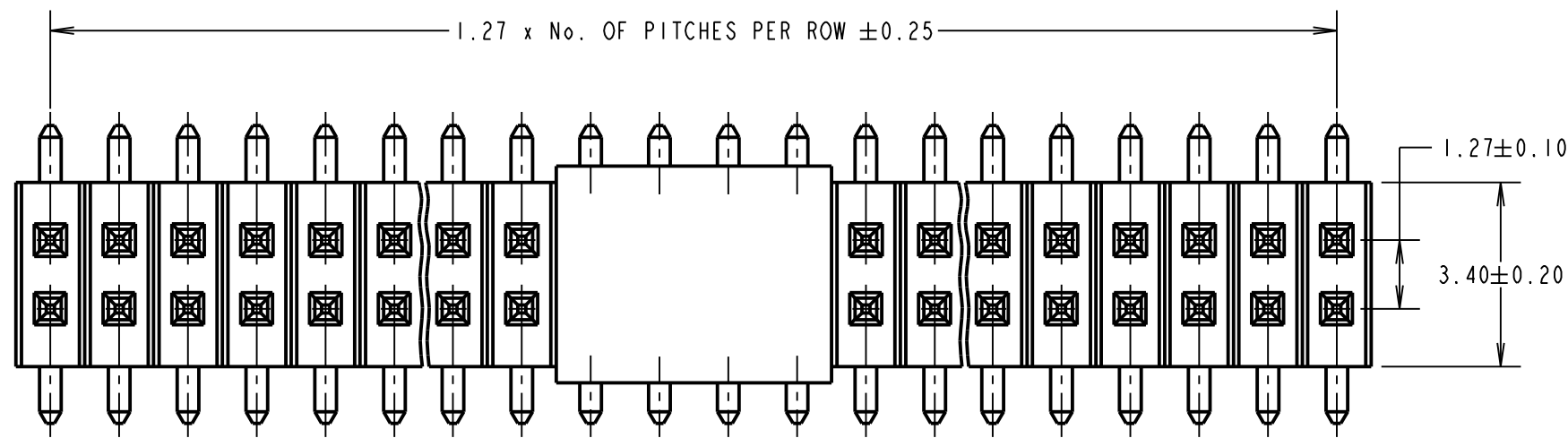
IF IN DOUBT - ASK

©

NOT TO SCALE

THIRD ANGLE PROJECTION

ALL DIMENSIONS IN mm



PICK & PLACE CAP			
No OF WAYS PER ROW	DIM 'A'	DIM 'B'	DIM 'C'
03	3.60	5.00	3.30
05, 06	5.08 ± 0.20	4.00	3.75
10, 20, 25	6.40	5.00	3.30

SPECIFICATIONS:

MATERIAL:
 MOULDING = NYLON 6T UL94V-0, BLACK
 CONTACT = BRASS

FINISH:
 CONTACT = 0.15 - 0.08 μ GOLD ON CONTACT AREA,
 2.5 - 3.0 μ 100% TIN ON TAILS, OVER
 0.7 - 1.3 μ NICKEL

ELECTRICAL:
 CURRENT RATING (ALL CONTACTS ARE
 ELECTRICALLY LOADED = 1A)
 CONTACT RESISTANCE = 20m Ω MAX
 INSULATION RESISTANCE = 1000M Ω MIN.
 DIELECTRIC VOLTAGE = 500V AC FOR ONE MINUTE

MECHANICAL:
 PIN RETENTION = 4.4N NOMINAL
 SOLDER ABILITY = 250°C FOR 3 TO 5 SECONDS
 DURABILITY = 600 CYCLES

ENVIRONMENTAL:
 TEMPERATURE RANGE = -55°C TO +105°C

NOTES:

1. FOR TAPE AND REEL DETAILS, SEE SHEET 3.
2. ALL TOLERANCES ARE ± 0.15 UNLESS OTHERWISE STATED.
3. CAP STYLE SHOWN MAY DIFFER FROM CAP SUPPLIED.
4. CO-PLANARITY OF TAILS FOR 2 TO 30 WAYS = 0.15mm,
 31 TO 50 WAYS = 0.20mm.

ORDER CODE:
M50-360XX42R

No. OF WAYS PER ROW _____
 03, 05, 06, 10, 20, 25

FINISH: _____
 SELECTIVE GOLD + 100% TIN

SB	8	06.03.12	11678
NAME	ISS.	DATE	C/NOTE
APPROVED:		S.BENNETT	
CHECKED:		M.G.PLESTED	
DRAWN:		R.ADDE	
CUSTOMER REF.:			
ASSEMBLY DRG:			

HARWIN

www.harwin.com
 technical@harwin.com

THIS DRAWING AND ANY INFORMATION OR DESCRIPTIVE MATTER SET OUT HEREON ARE CONFIDENTIAL AND COPYRIGHT PROPERTY OF THE HARWIN GROUP AND MUST NOT BE DISCLOSED, LOANED, COPIED OR USED FOR MANUFACTURING, TENDERING OR FOR ANY OTHER PURPOSE WITHOUT THEIR WRITTEN PERMISSION.

TOLERANCES
 X. = ± 1 mm
 X.X = ± 0.25 mm
 X.XX = ± 0.10 mm
 X.XXX = ± 0.01 mm
 ANGLES = $\pm 5^\circ$
 UNLESS STATED

MATERIAL:
 SEE ABOVE

FINISH: SEE ABOVE

S/AREA: mm²

TITLE: 1.27mm PITCH DIL SMT VERT
 LOW PROFILE SOCKET ASSY
 (TAPE & REEL)

DRAWING NUMBER:
M50-360XX42R

SHT 4 OF 4