

Customer Information Sheet

DRAWING No.: M50-315XX42R

SHEET 3 OF 4

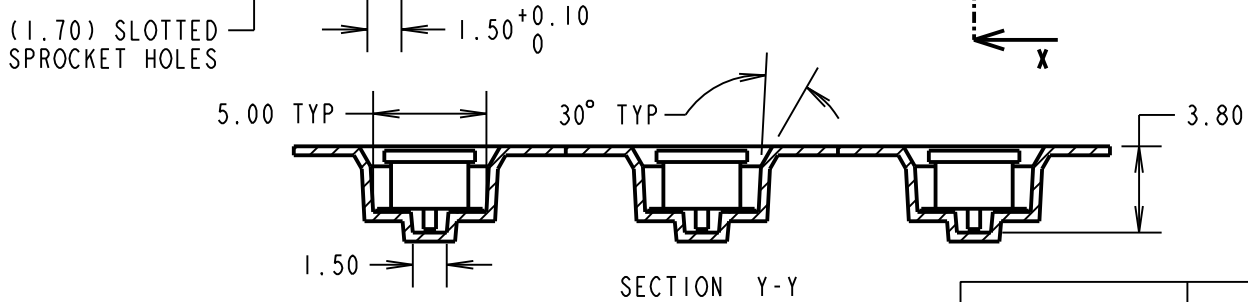
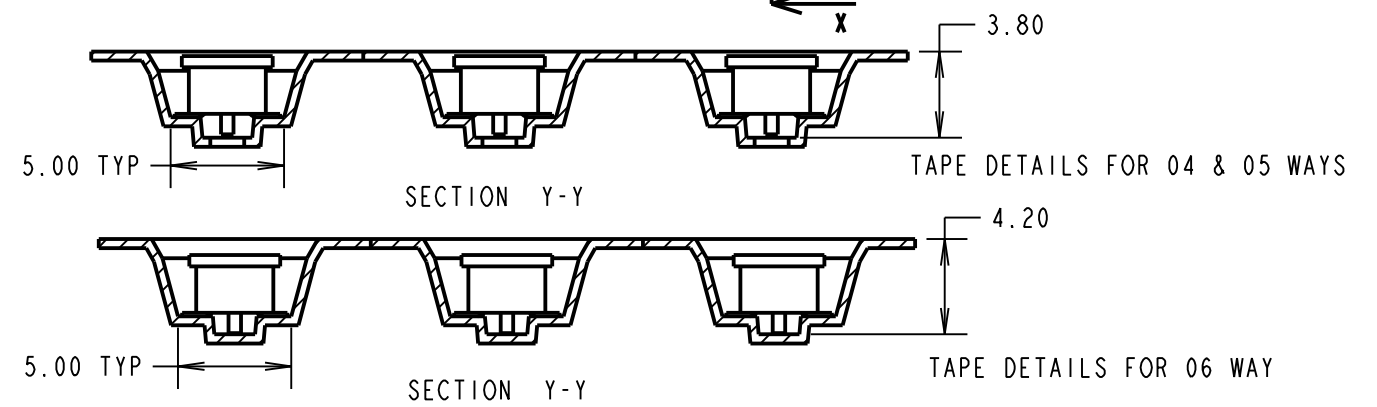
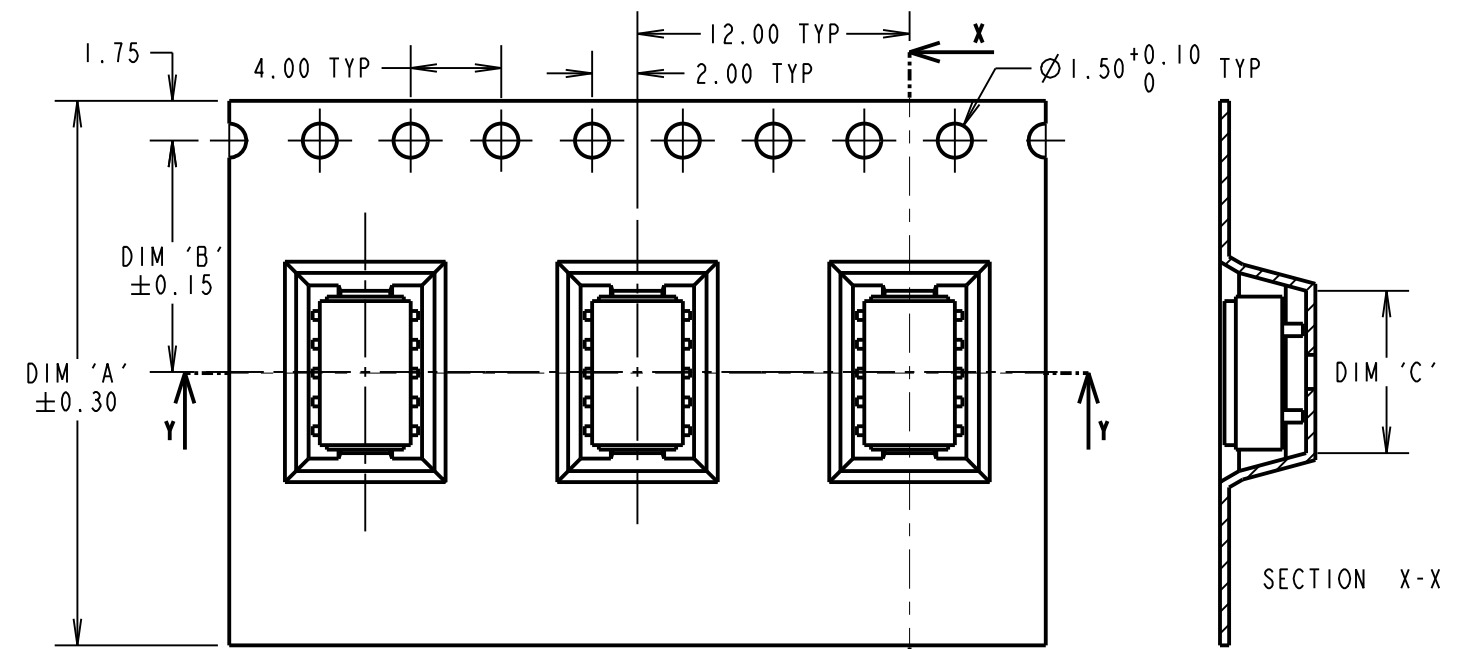
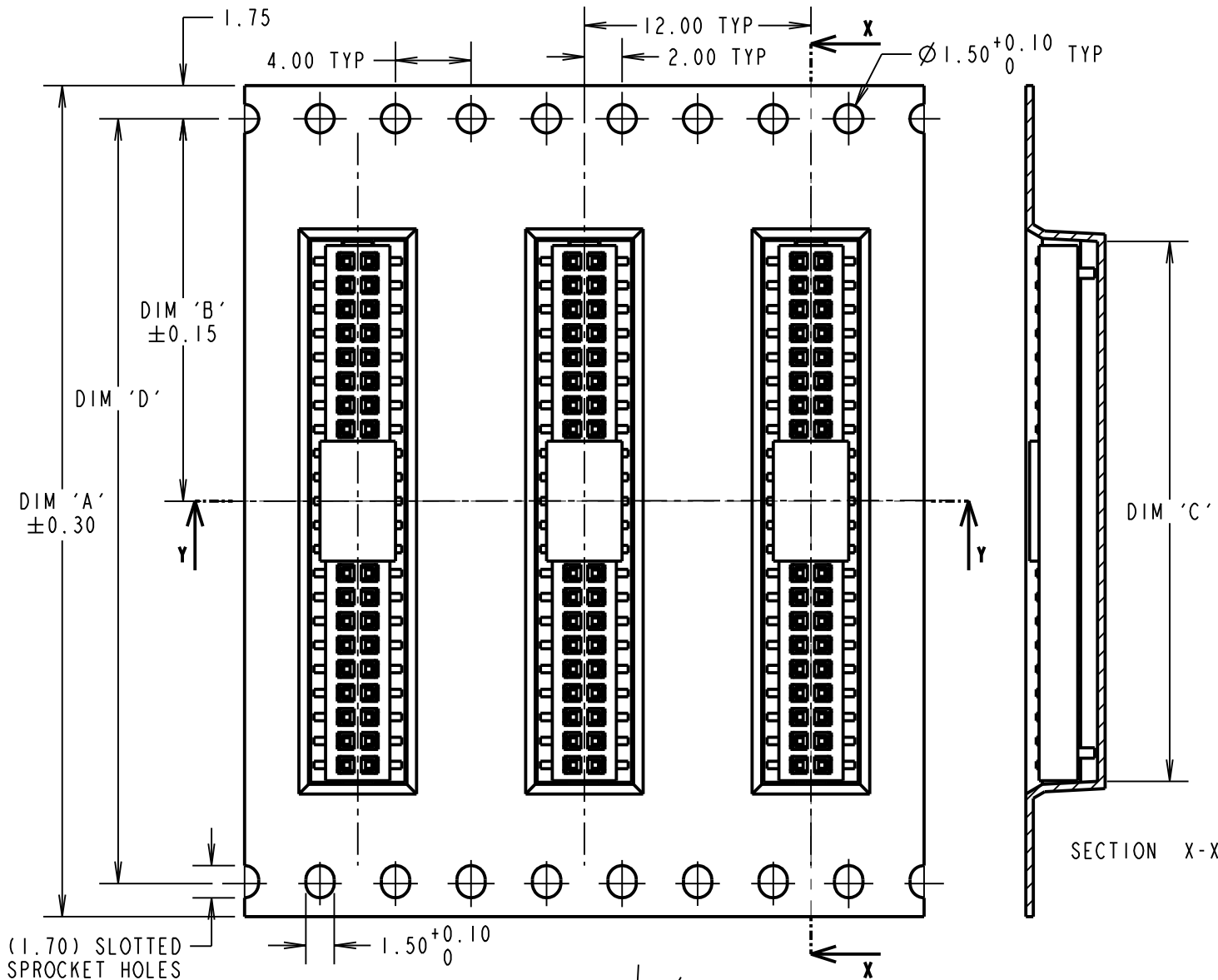
IF IN DOUBT - ASK

(C)

NOT TO SCALE

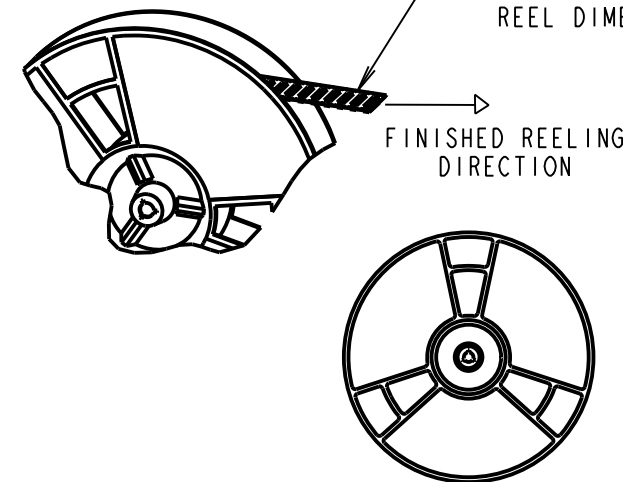
THIRD ANGLE PROJECTION

ALL DIMENSIONS IN mm



ROUND HOLES THIS SIDE
(NB: THIS APPLIES TO ALL WAYS)

REEL DIMENSIONS & DETAILS



ORDER CODE:
M50-315XX42R

No. OF WAYS PER ROW
04, 05, 06, 10, 20, 22, 25

FINISH:
SELECTIVE GOLD + 100% TIN

REELED PART No.	DIM 'A'	DIM 'B'	DIM 'C'	DIM 'D'
M50-3150442R	16.00	7.50	5.78	—
M50-3150542R	24.00	10.20	7.15	—
M50-3150642R	16.00	7.50	8.30	—
M50-3151042R	24.00	11.50	13.40	—
M50-3152042R	44.00	20.20	26.10	40.40
M50-3152242R	44.00	20.20	28.60	40.40
M50-3152542R	44.00	20.20	32.45	40.40

- NOTES:
- PACKING CONFORMS TO EIA-481 STANDARDS.
 - CUMULATIVE TOLERANCES OVER 10 PITCHES = ± 0.20 mm
 - QUANTITY PER REEL: M50-3150542R & M50-3150442R = 1400.
M50-3150642R & M50-3152242R = 1300
 - FOR DETAILS OF INDIVIDUAL COMPONENT SEE DRAWING: M50-315XX42.

HARWIN

HARWIN USA
TEL: 603 893 5376
FAX: 603 893 5396
mis@harwin.com

HARWIN Europe (UK)
TEL: 023 9231 4545
FAX: 023 9231 4590
mis@harwin.co.uk

HARWIN Asia
TEL: +65 6 779 4909
FAX: +65 6 779 3868
mis@harwin.com.sg

THIS DRAWING AND ANY INFORMATION OR DESCRIPTIVE MATTER SET OUT HEREON ARE CONFIDENTIAL AND COPYRIGHT PROPERTY OF THE HARWIN GROUP AND MUST NOT BE DISCLOSED, LOANED, COPIED OR USED FOR MANUFACTURING, TENDERING OR FOR ANY OTHER PURPOSE WITHOUT THEIR WRITTEN PERMISSION.

TOLERANCES
X. = ± 1 mm
X.X = ± 0.25 mm
X.XX = ± 0.10 mm
X.XXX = ± 0.01 mm
ANGLES = $\pm 5^\circ$
UNLESS STATED

MATERIAL:
SEE ABOVE

FINISH:
SEE ABOVE

S/AREA:
mm²

TITLE: 1.27mm PITCH DIL SMT VERT
LOW PROFILE SOCKET ASSY
(TAPE & REEL)

DRAWING NUMBER:
M50-315XX42R

ASSEMBLY DRG:

SB	3	24.08.11	11415
NAME	ISS.	DATE	C/NOTE
APPROVED:	S.BENNETT		
CHECKED:	S.FLOWER		
DRAWN:	R.ADDE		
CUSTOMER REF.:			
ASSEMBLY DRG:			

Customer Information Sheet

DRAWING No.: M50-315XX42R

SHEET 4 OF 4

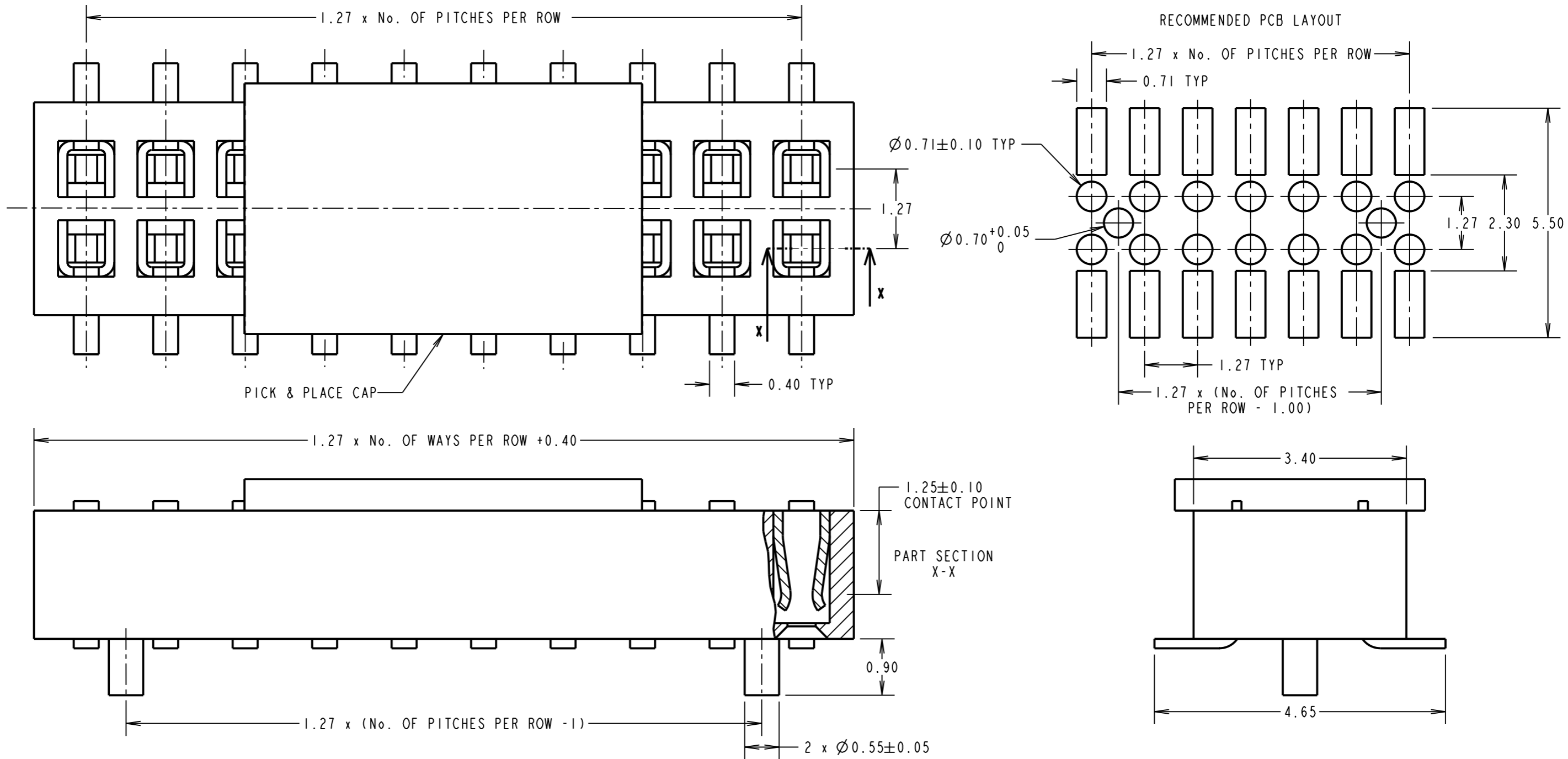
IF IN DOUBT - ASK

©

NOT TO SCALE

THIRD ANGLE PROJECTION

ALL DIMENSIONS IN mm



SPECIFICATIONS:

MATERIAL:
 MOULDING = 30% GLASS-FILLED NYLON-6T UL94V-0
 CONTACTS = PHOSPHOR BRONZE

FINISH:
 GOLD ON CONTACT AREA, 100% TIN ON TAILS

ELECTRICAL:
 CURRENT RATING = (ALL CONTACTS ARE ELECTRICALLY LOADED) = 1 AMP

CONTACT RESISTANCE = 15 MILLIOHMS MAX
 INSULATION RESISTANCE = 1000 MEGAOHMS MIN @ 250V
 DIELECTRIC WITHSTANDING = 1000V AC MIN (1 MIN)

ENVIRONMENTAL:
 TEMPERATURE RANGE = -55°C TO +105°C

NOTES:

1. FOR TAPE & REEL DETAILS, SEE SHEET 3.
2. FOR DETAILS OF STANDARD COMPONENT SEE DRAWING M50-315XX42.
3. ALL TOLERANCES ARE ±0.25 UNLESS OTHERWISE STATED.

ORDER CODE:

M50-315XX42R

No. OF WAYS PER ROW _____
 04, 05, 06, 10, 20, 22, 25

FINISH: _____
 SELECTIVE GOLD + 100% TIN

SB	3	24.08.11	11415
NAME	ISS.	DATE	C/NOTE
APPROVED:		S.BENNETT	
CHECKED:		S.FLOWER	
DRAWN:		R.ADDE	
CUSTOMER REF.:			
ASSEMBLY DRG:			

HARWIN			THIS DRAWING AND ANY INFORMATION OR DESCRIPTIVE MATTER SET OUT HEREON ARE CONFIDENTIAL AND COPYRIGHT PROPERTY OF THE HARWIN GROUP AND MUST NOT BE DISCLOSED, LOANED, COPIED OR USED FOR MANUFACTURING, TENDERING OR FOR ANY OTHER PURPOSE WITHOUT THEIR WRITTEN PERMISSION.	TOLERANCES X. = ±1mm X.X = ±0.25mm X.XX = ±0.10mm X.XXX = ±0.01mm ANGLES = ±5° UNLESS STATED	MATERIAL: SEE ABOVE	TITLE: 1.27mm PITCH DIL SMT VERT LOW PROFILE SOCKET ASSY (TAPE & REEL)
HARWIN USA TEL: 603 893 5376 FAX: 603 893 5396 mis@harwin.com	HARWIN Europe (UK) TEL: 023 9231 4545 FAX: 023 9231 4590 mis@harwin.co.uk	HARWIN Asia TEL: +65 6 779 4909 FAX: +65 6 779 3868 mis@harwin.com.sg				
			FINISH: SEE ABOVE	S/AREA: mm ²	DRAWING NUMBER: M50-315XX42R	SHT 4 OF 4