

Customer Information Sheet

DRAWING No.: M50-315XXXX

SHEET 2 OF 2

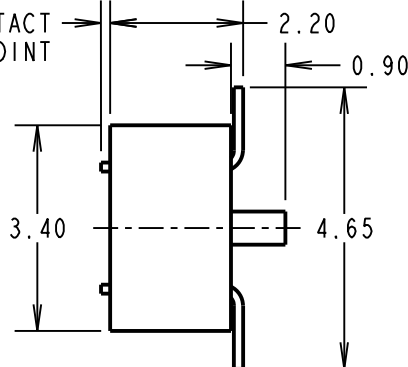
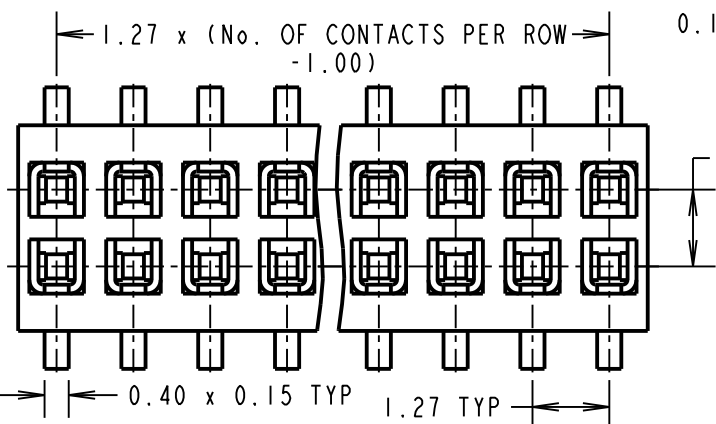
IF IN DOUBT - ASK

©

NOT TO SCALE

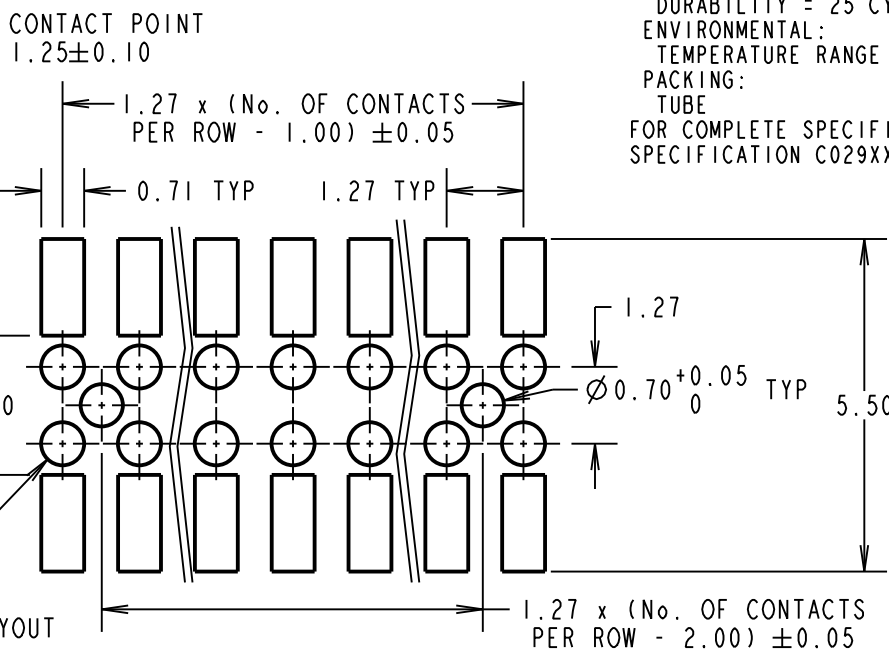
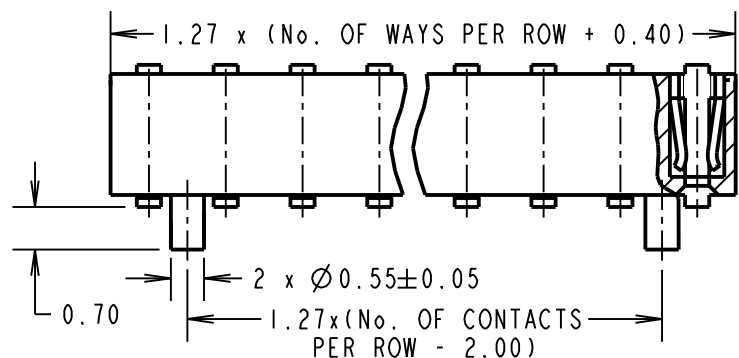
THIRD ANGLE PROJECTION

ALL DIMENSIONS IN mm



SPECIFICATION:
MATERIAL:
 MOULDING = 30% GLASS FILLED NYLON-6T UL94V-0
 CONTACTS = PHOSPHOR BRONZE
FINISH:
 42 = GOLD ON CONTACT AREA, 100% TIN OVER NICKEL ON TAILS
ELECTRICAL:
 CURRENT RATING = 1A
 CONTACT RESISTANCE = 20mΩ MAX
 INSULATION RESISTANCE = 1000MΩ MIN @ 250V
 DIELECTRIC WITHSTANDING = 500V AC (1 MINUTE)
MECHANICAL:
 CONTACT RETENTION = 2.5N MIN
 INSERTION FORCE = 2.0N MAX
 WITHDRAWAL FORCE = 0.3N MIN
 SOLDERABILITY = 260°C FOR 3 SECONDS
 DURABILITY = 25 CYCLES
ENVIRONMENTAL:
 TEMPERATURE RANGE = -40°C TO +105°C
PACKING:
 TUBE
 FOR COMPLETE SPECIFICATION, SEE COMPONENT SPECIFICATION C029XX (LATEST ISSUE)

NOTES:
 1. ALL TOLERANCES ARE ±0.25 UNLESS OTHERWISE STATED.



ORDER CODE
M50-315XXXX

No. OF WAYS PER ROW: _____
 03 TO 50
 FINISH: _____
 42 = SELECTIVE GOLD + 100% TIN

SB	13	22.08.11	11415
NAME	ISS.	DATE	C/NOTE
APPROVED:		S.BENNETT	
CHECKED:		S.FLOWER	
DRAWN:		W. J. BOURNE	
CUSTOMER REF.:			
ASSEMBLY DRG:			

HARWIN

HARWIN USA TEL: 603 893 5376 FAX: 603 893 5396 mis@harwin.com	HARWIN Europe (UK) TEL: 023 9231 4545 FAX: 023 9231 4590 mis@harwin.co.uk	HARWIN Asia TEL: +65 6 779 4909 FAX: +65 6 779 3868 mis@harwin.com.sg
--	--	--

THIS DRAWING AND ANY INFORMATION OR DESCRIPTIVE MATTER SET OUT HEREON ARE CONFIDENTIAL AND COPYRIGHT PROPERTY OF THE HARWIN GROUP AND MUST NOT BE DISCLOSED, LOANED, COPIED OR USED FOR MANUFACTURING, TENDERING OR FOR ANY OTHER PURPOSE WITHOUT THEIR WRITTEN PERMISSION.

TOLERANCES
~~X = ±1mm~~
~~X.X = ±0.25mm~~
~~X.XX = ±0.10mm~~
~~X.XXX = ±0.01mm~~
 ANGLES = 5°
 UNLESS STATED

MATERIAL:
 SEE ABOVE

FINISH: SEE ABOVE

S/AREA: mm²

TITLE:
 1.27mm PITCH DIL SMT VERT.
 LOW-PROFILE SOCKET ASSY

DRAWING NUMBER:
M50-315XXXX

SHT 2 OF 2