

# Customer Information Sheet

DRAWING No.: M30-600XX46

SHEET 2 OF 2

IF IN DOUBT - ASK

©

NOT TO SCALE

THIRD ANGLE PROJECTION

ALL DIMENSIONS IN mm

**SPECIFICATIONS:**

**MATERIAL:**  
 Moulding - POLYAMIDE 46 NATURAL, UL94V-0  
 CONTACT - BRASS  
 RETAINER - PHOSPHOR BRONZE

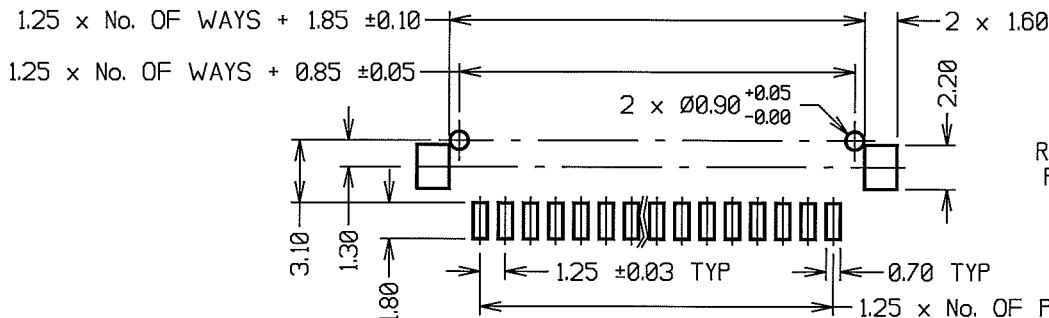
**FINISH:**  
 CONTACT & RETAINER - 100% TIN

**ELECTRICAL:**  
 RATED CURRENT - 1A AC/DC  
 RATED VOLTAGE - 150V AC/DC  
 DIELECTRIC STRENGTH - 500V AC  
 INSULATION RESISTANCE - 1000 MEGOHMS MIN  
 DIELECTRIC WITHSTANDING VOLTAGE - 500V AC

**ENVIRONMENTAL:**  
 TEMPERATURE RANGE - -55°C TO +85°C

**PACKING:** TUBE

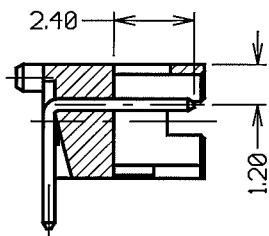
FOR COMPLETE SPECIFICATIONS,  
 SEE COMPONENT SPECIFICATION  
 C025XX (LATEST ISSUE)



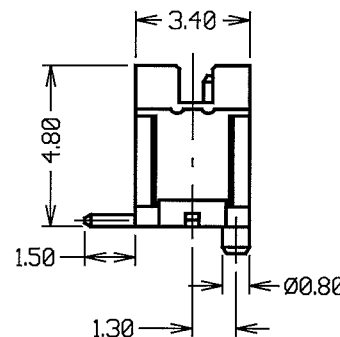
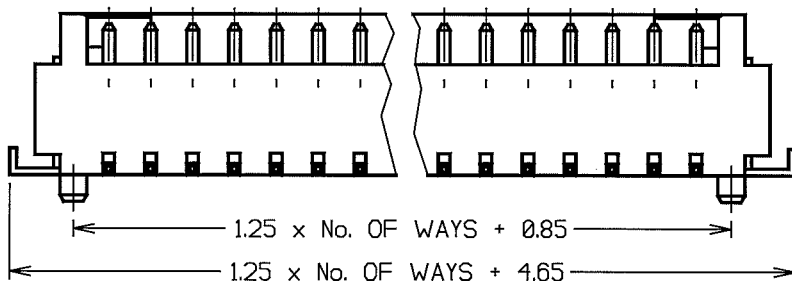
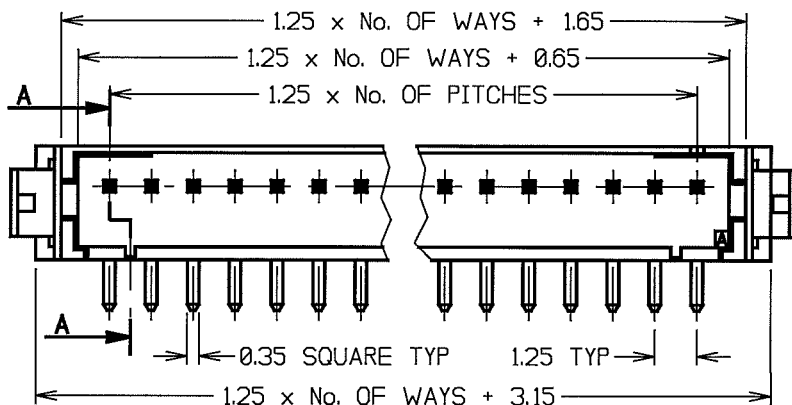
RECOMMENDED  
PAD LAYOUT

**NOTES:**

1. ALL TOLERANCES ARE ±0.30 UNLESS OTHERWISE STATED.
2. MATES WITH M30-1000046 CRIMP CONTACTS AND M30-110XX00 CRIMP MOULDING.
3. COPLANARITY OF CONTACTS TO BE 0.2mm MAX.



SECTION A-A



ORDER CODE:  
**M30-600XX46**

No. OF WAYS: \_\_\_\_\_  
 02 TO 15

FINISH: \_\_\_\_\_  
 46 = 100% TIN

|                              |      |          |        |
|------------------------------|------|----------|--------|
| RA                           | 7    | 06.08.08 | 10118  |
| NAME                         | ISS. | DATE     | C/NOTE |
| APPROVED: <i>[Signature]</i> |      |          |        |
| CHECKED: <i>[Signature]</i>  |      |          |        |
| DRAWN: W. J. BOURNE          |      |          |        |
| CUSTOMER REF.:               |      |          |        |
| ASSEMBLY DRG.:               |      |          |        |

**HARWIN**

|   |   |   |
|---|---|---|
| HARWIN USA<br>TEL: 603 893 5376<br>FAX: 603 893 5396<br>m3@harwin.com | HARWIN Europe (UK)<br>TEL: 023 9231 4545<br>FAX: 023 9231 4590<br>m3@harwin.co.uk | HARWIN Asia<br>TEL: +65 6 779 4909<br>FAX: +65 6 779 3868<br>m3@harwin.com.sg |
|---|---|---|

THIS DRAWING AND ANY INFORMATION OR DESCRIPTIVE MATTER SET OUT HEREON ARE CONFIDENTIAL AND COPYRIGHT PROPERTY OF THE HARWIN GROUP AND MUST NOT BE DISCLOSED, LOANED, COPIED OR USED FOR MANUFACTURING, TENDERING OR FOR ANY OTHER PURPOSE WITHOUT THEIR WRITTEN PERMISSION.

**TOLERANCES**  
 X. = ±1mm  
 X.X = ±0.25mm  
 X.XX = ±0.10mm  
 X.XXX = ±0.01mm  
 ANGLES = ±5°  
 UNLESS STATED

**MATERIAL:** SEE ABOVE  
**FINISH:** SEE ABOVE  
**S/AREA:** mm<sup>2</sup>

**TITLE:** 1.25mm PITCH SIL SMT BOARD MOUNT CONNECTOR  
**DRAWING NUMBER:** M30-600XX46

SHT 2 OF 2