

# Customer Information Sheet

DRAWING No: BF-550XX22

SHEET 2 OF 2

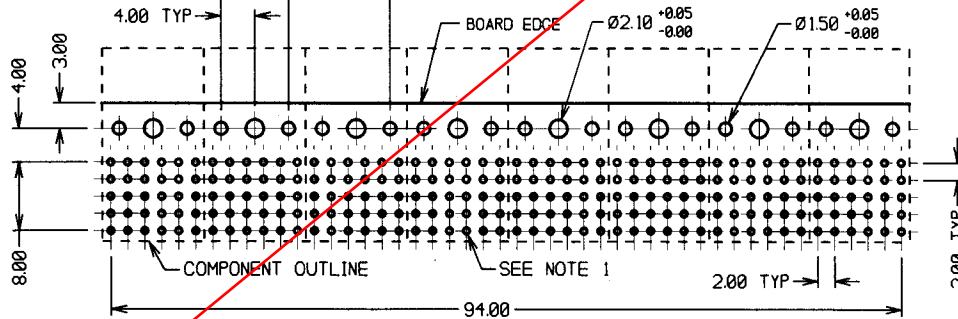
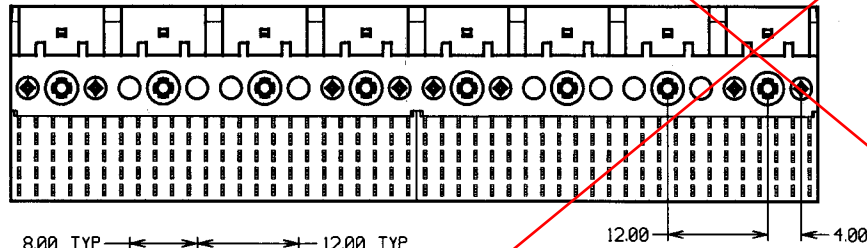
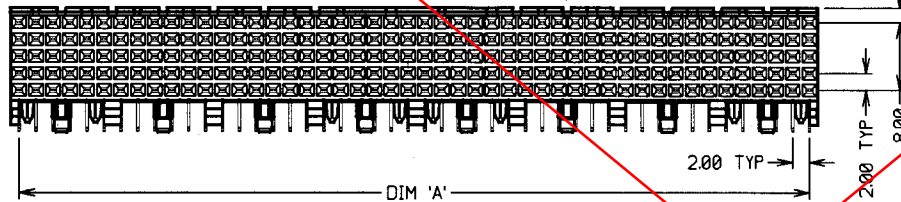
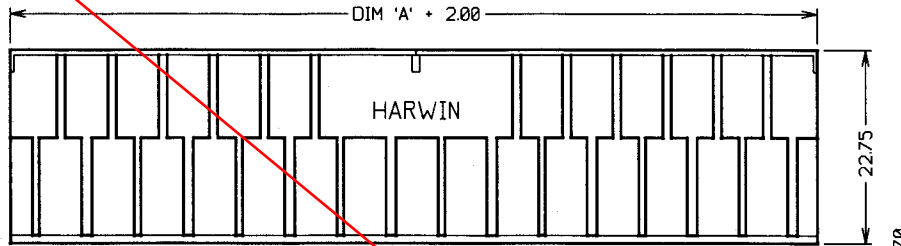
IF IN DOUBT - ASK

©

NOT TO SCALE

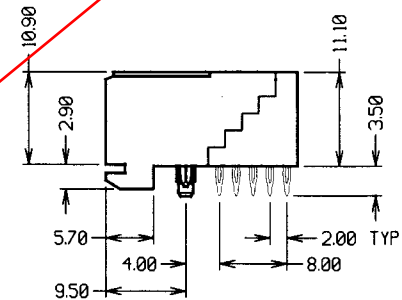
THIRD ANGLE PROJECTION

ALL DIMENSIONS IN mm



RECOMMENDED PCB HOLE LAYOUT

PART No.	No. OF MODULES	No. OF CONTACTS	DIM 'A'
BF-5500622	1	30	10.00
BF-5501222	2	60	22.00
BF-5502422	4	120	46.00
BF-5504822	8	240	94.00



NOTES:

- PCB HOLES TO BE PLATED THROUGH HOLES.  
DRILLED HOLE =  $\varnothing 0.69-0.72$ mm.  
PLATING THICKNESSES = 25 $\mu$  MIN COPPER, 5-15 $\mu$  TIN.  
FINAL PLATED HOLE =  $\varnothing 0.55-0.65$ mm.
- MATES WITH MALE CONNECTORS: BF-50XXX22, BF-51XXX22, BF-52XXX22, BF-53XXX22 AND BF-54XXX22.
- FOR COMPLETE SPECIFICATION, SEE COMPONENT SPECIFICATION C037XX (LATEST ISSUE).

SPECIFICATIONS:

MATERIALS:

MOULDING - 30% GLASS-FILLED LCP,  
UL94V-0, NATURAL  
CONTACTS - PHOSPHOR BRONZE

FINISH:

CONTACTS - 0.76 $\mu$  GOLD ON CONTACT AREA,  
1.27-2.54 $\mu$  TIN/LEAD ON TAILS

ELECTRICAL:

CURRENT RATING - 1 AMP  
VOLTAGE RATING - 30V AC  
DIELECTRIC STRENGTH - 1,000V AC FOR 1 MINUTE  
CONTACT RESISTANCE - 45 MILLIOHMS MAX  
INSULATION RESISTANCE - 100 MEGOHMS MIN

MECHANICAL:

DURABILITY - 250 OPERATIONS  
INSERTION FORCE = 0.70N MAX PER CONTACT  
WITHDRAWAL FORCE = 0.12N MIN PER CONTACT  
PRESS-FIT INSERTION FORCE  
= 50N MAX PER CONTACT

ENVIRONMENTAL:

TEMPERATURE RANGE - -55°C TO +125°C

PACKING:

TUBE

WJB	1	050302	----
NAME	ISS.	DATE	C/NOTE
APPROVED:			
CHECKED:			
DRAWN:		W. J. BOURNE	
CUSTOMER REF.:			
ASSEMBLY DRG:			

**OBSOLETE**

**HARWIN**

HARWIN INC U.S.A. TEL: (812) 285 0855 FAX: (812) 285 0050	HARWIN PLC UK TEL: 023 9237 0451 FAX: 023 9231 4590	HARWIN PTE SINGAPORE TEL: 65 7794909 FAX: 65 7793808
--	--	---

THIS DRAWING AND ANY INFORMATION OR DESCRIPTIVE MATTER SET OUT HEREON ARE CONFIDENTIAL AND COPYRIGHT PROPERTY OF THE HARWIN GROUP AND MUST NOT BE DISCLOSED, LOANED, COPIED OR USED FOR MANUFACTURING, TENDERING OR FOR ANY OTHER PURPOSE WITHOUT THEIR WRITTEN PERMISSION

TOLERANCES
X. = $\pm 1$ mm
X.X = $\pm 0.25$ mm
X.XX = $\pm 0.10$ mm
X.XXX = $\pm 0.01$ mm
ANGLES = $\pm 5^\circ$
UNLESS STATED

MATERIAL:	SEE ABOVE
FINISH:	SEE ABOVE
S/AREA:	mm <sup>2</sup>

TITLE:	5-ROW FUTUREBUS 2mm PITCH FEMALE CONNECTOR (HORIZONTAL)
DRAWING NUMBER:	BF-550XX22
SHT	2 OF 2