

Customer Information Sheet

DRAWING No. BF-53XXX22

SHEET 2 OF 2

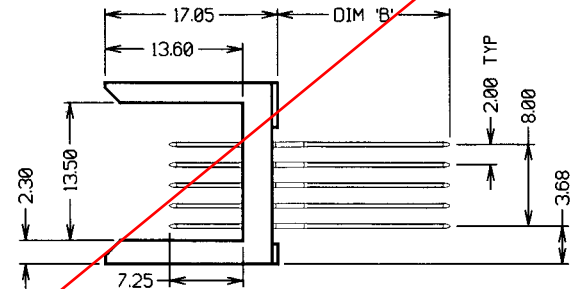
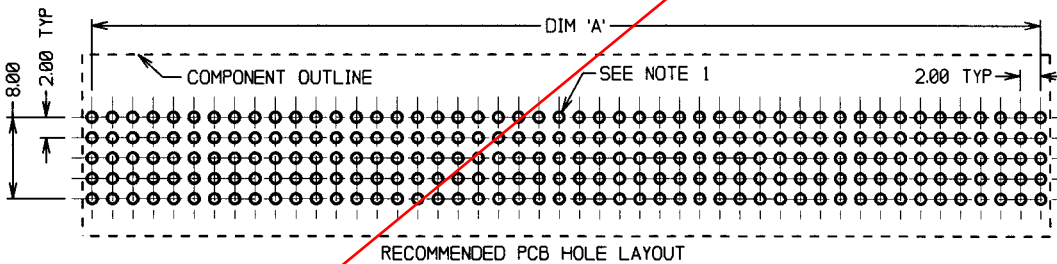
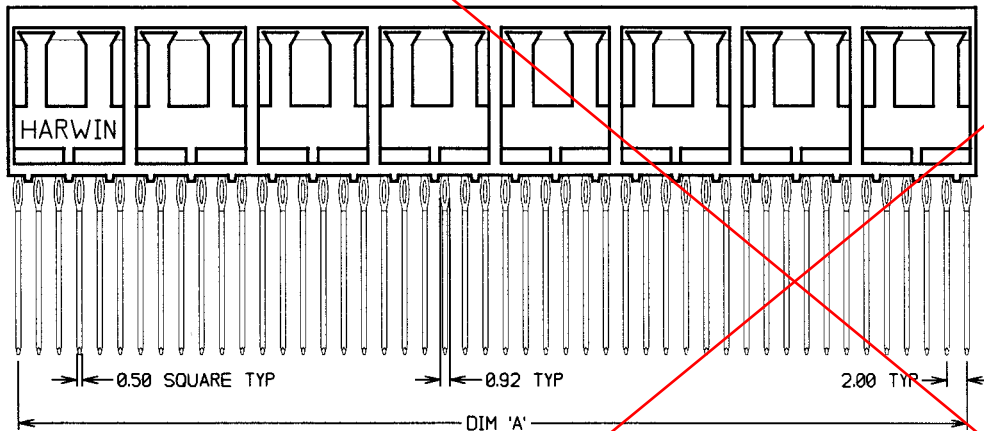
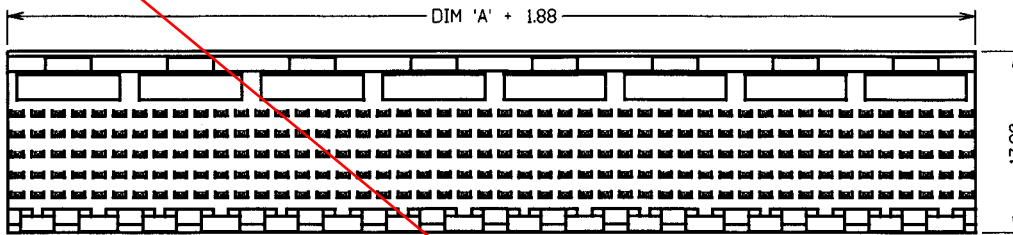
IF IN DOUBT - ASK

(C)

NOT TO SCALE

THIRD ANGLE PROJECTION

ALL DIMENSIONS IN mm



PART No.	No. OF MODULES	No. OF CONTACTS	DIM 'A'	DIM 'B'
BF-5300622	1	30	10.00	4.25
BF-5301222	2	60	22.00	4.25
BF-5302422	4	120	46.00	4.25
BF-5304822	8	240	94.00	4.25
BF-5310622	1	30	10.00	13.60
BF-5311222	2	60	22.00	13.60
BF-5312422	4	120	46.00	13.60
BF-5314822	8	240	94.00	13.60
BF-5320622	1	30	10.00	15.60
BF-5321222	2	60	22.00	15.60
BF-5322422	4	120	46.00	15.60
BF-5324822	8	240	94.00	15.60
BF-5330622	1	30	10.00	17.00
BF-5331222	2	60	22.00	17.00
BF-5332422	4	120	46.00	17.00
BF-5334822	8	240	94.00	17.00

SPECIFICATIONS:

MATERIALS:
 MOULDING = 30% GLASS-FILLED LCP; UL94V-0, NATURAL
 CONTACTS = PHOSPHOR BRONZE

FINISH:
 CONTACTS = 0.76µ GOLD ON CONTACT AREA, 1.27-2.54µ TIN/LEAD ON TAILS

ELECTRICAL:
 CURRENT RATING = 1 AMP
 VOLTAGE RATING = 30V AC
 DIELECTRIC STRENGTH = 1,000V AC FOR 1 MINUTE
 CONTACT RESISTANCE = 45 MILLIOHMS MAX
 INSULATION RESISTANCE = 100 MEGOHMS MIN

MECHANICAL:
 DURABILITY = 250 OPERATIONS
 PRESS-FIT INSERTION FORCE = 50N MAX PER CONTACT

ENVIRONMENTAL:
 TEMPERATURE RANGE = -55°C TO +125°C

PACKING:
 TUBE

JWB	1	05.03.02	----
NAME	ISS.	DATE	C/NOTE
APPROVED:			
CHECKED:			
DRAWN:			
CUSTOMER REF.:			
ASSEMBLY DRG.			

NOTES:

- PCB HOLES TO BE PLATED THROUGH HOLES.
 DRILLED HOLE = 0.69-0.72mm.
 PLATING THICKNESSES = 25µ MIN COPPER, 5-15µ TIN.
 FINAL PLATED HOLE = 0.55-0.65mm.
- MATES WITH FEMALE CONNECTOR BF-550XX22.
- FOR COMPLETE SPECIFICATION, SEE COMPONENT SPECIFICATION C037XX (LATEST ISSUE).

OBSOLETE

HARWIN			THIS DRAWING AND ANY INFORMATION OR DESCRIPTIVE MATTER SET OUT HEREON ARE CONFIDENTIAL AND COPYRIGHT PROPERTY OF THE HARWIN GROUP AND MUST NOT BE DISCLOSED, LOANED, COPIED OR USED FOR MANUFACTURING, TENDERING OR FOR ANY OTHER PURPOSE WITHOUT THEIR WRITTEN PERMISSION	TOLERANCES X = ±1mm XX = ±0.25mm XXX = ±0.10mm XXXX = ±0.01mm ANGLES = ±5° UNLESS STATED	MATERIAL: SEE ABOVE	TITLE: 5-ROW FUTUREBUS 2mm PITCH MALE CONNECTOR (7.25mm CONTACT HEIGHT)
HARWIN INC U.S.A. TEL: (812) 285 0055 FAX: (812) 285 0050	HARWIN PLC U.K. TEL: 023 9237 0451 FAX: 023 9231 4590	HARWIN PTE SINGAPORE TEL: 65 7794909 FAX: 65 7793808		FINISH: SEE ABOVE S/AREA: mm ²	DRAWING NUMBER: BF-53XXX22	SHT 2 OF 2