

Customer Information Sheet

DRAWING No: BF-43XXX22

SHEET 2 OF 2

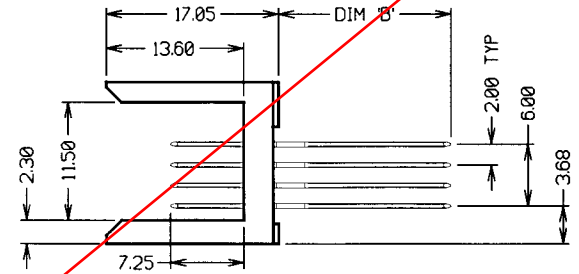
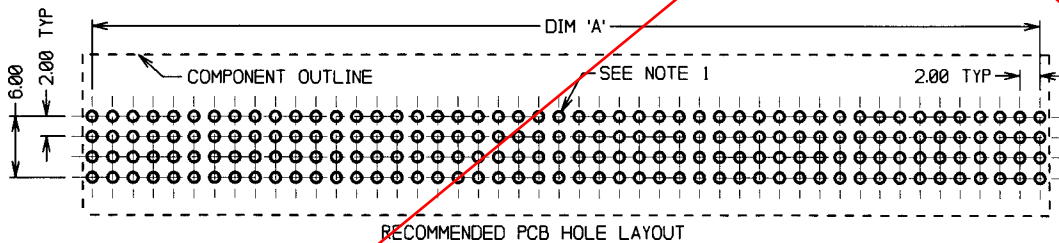
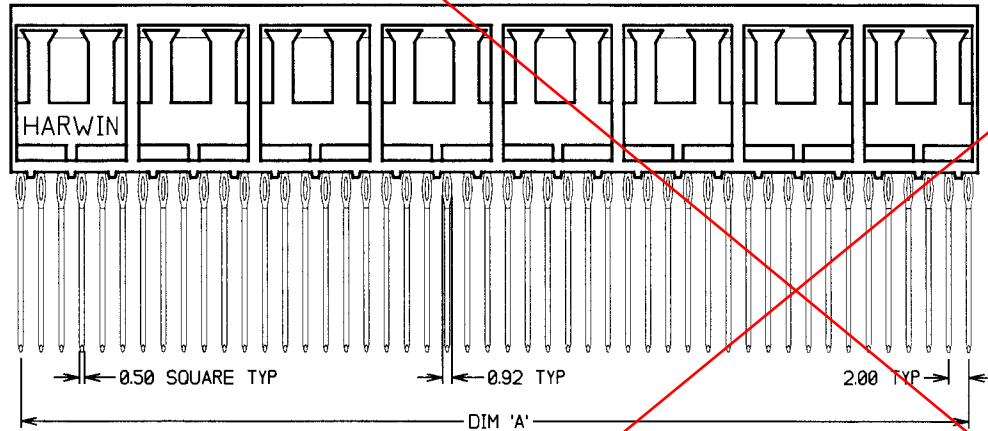
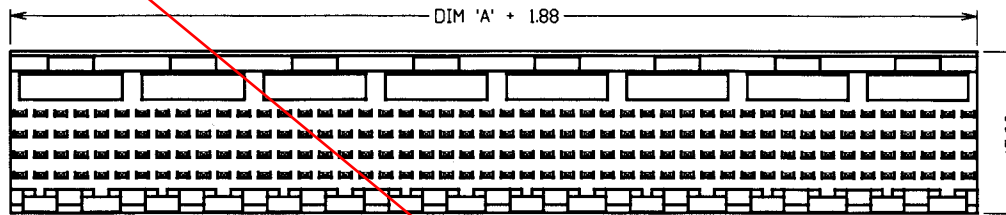
IF IN DOUBT - ASK

©

NOT TO SCALE

THIRD ANGLE PROJECTION

ALL DIMENSIONS IN mm



PART No.	No. OF MODULES	No. OF CONTACTS	DIM 'A'	DIM 'B'
BF-4300622	1	24	10.00	4.25
BF-4301222	2	48	22.00	4.25
BF-4302422	4	96	46.00	4.25
BF-4304822	8	192	94.00	4.25
BF-4310622	1	24	10.00	13.60
BF-4311222	2	48	22.00	13.60
BF-4312422	4	96	46.00	13.60
BF-4314822	8	192	94.00	13.60
BF-4320622	1	24	10.00	15.60
BF-4321222	2	48	22.00	15.60
BF-4322422	4	96	46.00	15.60
BF-4324822	8	192	94.00	15.60
BF-4330622	1	24	10.00	17.00
BF-4331222	2	48	22.00	17.00
BF-4332422	4	96	46.00	17.00
BF-4334822	8	192	94.00	17.00

SPECIFICATIONS:

MATERIALS:
 MOULDING - 30% GLASS-FILLED LCP,
 UL94V-0, NATURAL
 CONTACTS - PHOSPHOR BRONZE
FINISH:
 CONTACTS - 0.76µ GOLD ON CONTACT AREA,
 1.27-2.54µ TIN/LEAD ON TAIL

ELECTRICAL:
 CURRENT RATING - 1 AMP
 VOLTAGE RATING 30V AC
 DIELECTRIC STRENGTH
 = 1000V AC FOR 1 MINUTE
 CONTACT RESISTANCE
 = 45 MILLIOHMS MAX
 INSULATION RESISTANCE
 = 100 MEGOHMS MIN

MECHANICAL:
 DURABILITY - 250 OPERATIONS
 PRESS-FIT INSERTION FORCE
 = 50N MAX PER CONTACT

ENVIRONMENTAL:
 TEMPERATURE RANGE = -55°C TO +125°C

PACKING:
 TUBE

NOTES:

- PCB HOLES TO BE PLATED THROUGH HOLES.
 DRILLED HOLE = 0.69-0.72mm.
 PLATING THICKNESSES = 25µ MIN COPPER, 5-15µ TIN.
 FINAL PLATED HOLE = 0.55-0.65mm.
- MATES WITH FEMALE CONNECTOR BF-450XX22.
- FOR COMPLETE SPECIFICATION, SEE COMPONENT SPECIFICATION C037XX (LATEST ISSUE).

OBSOLETE

WJB	1	05.03.02	----
NAME	ISS	DATE	C/NOTE
APPROVED:	<i>[Signature]</i>		
CHECKED:	<i>[Signature]</i>		
DRAWN:	W. J. BOURNE		
CUSTOMER REF.:			
ASSEMBLY ORG.:			

HARWIN			THIS DRAWING AND ANY INFORMATION OR DESCRIPTIVE MATTER SET OUT HEREON ARE CONFIDENTIAL AND COPYRIGHT PROPERTY OF THE HARWIN GROUP AND MUST NOT BE DISCLOSED, LOANED, COPIED OR USED FOR MANUFACTURING, TENDERING OR FOR ANY OTHER PURPOSE WITHOUT THEIR WRITTEN PERMISSION.	TOLERANCES X. = ±1mm X.X = ±0.25mm X.XX = ±0.10mm X.XXX = ±0.01mm ANGLES = ±5° UNLESS STATED	MATERIAL: SEE ABOVE FINISH: SEE ABOVE S/AREA: mm ²	TITLE: 4-ROW FUTUREBUS 2mm PITCH MALE CONNECTOR (7.25mm CONTACT HEIGHT) DRAWING NUMBER: BF-43XXX22	SHT 2 OF 2
HARWIN INC U.S.A. TEL: (812) 285 0055 FAX: (812) 285 0056	HARWIN PLC U.K. TEL: 023 9237 0451 FAX: 023 9231 4590	HARWIN PTE SINGAPORE TEL: 65 7794909 FAX: 65 7793868		TITLE: 4-ROW FUTUREBUS 2mm PITCH MALE CONNECTOR (7.25mm CONTACT HEIGHT) DRAWING NUMBER: BF-43XXX22			