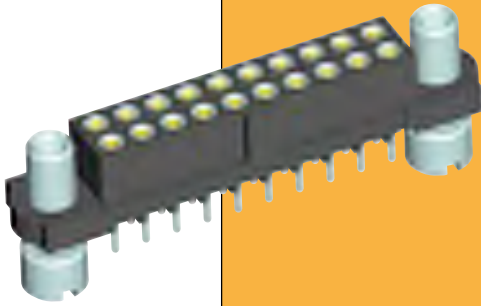


Datamate Connectors

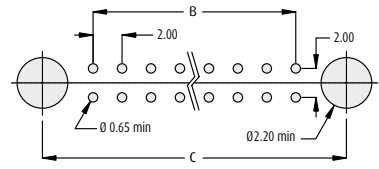
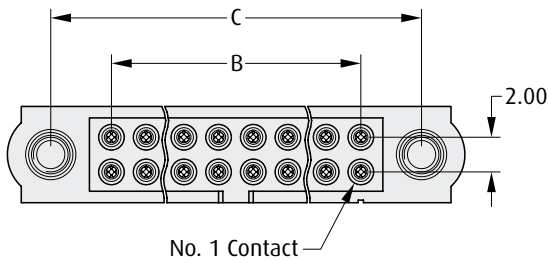
Female PC Tail Reverse Fix



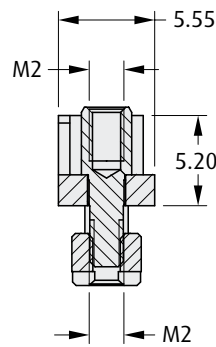
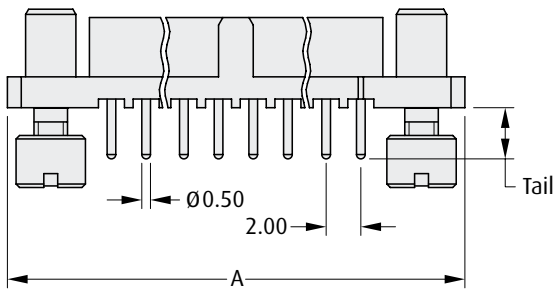
- ❖ Fully shrouded contacts.
- ❖ Polarised mouldings.
- ❖ Mates with male connectors shown on page 25.

WITH JACKSCREWS

CALCULATION	
A	$B + 12$
B	Total No. of contacts - 2
C	$B + 7$



Recommended PC Board Pattern



HOW TO ORDER

M80 - 40 X XX XX

SERIES CODE

TYPE	
5	3mm Tails
6	4.5mm Tails

FINISH	
01	Gold + Tin/Lead
42	Gold + Tin

TOTAL NO. OF CONTACTS	
06, 10, 14, 20, 26, 34, 42, 50	

www.harwin.com

All dimensions in mm.

